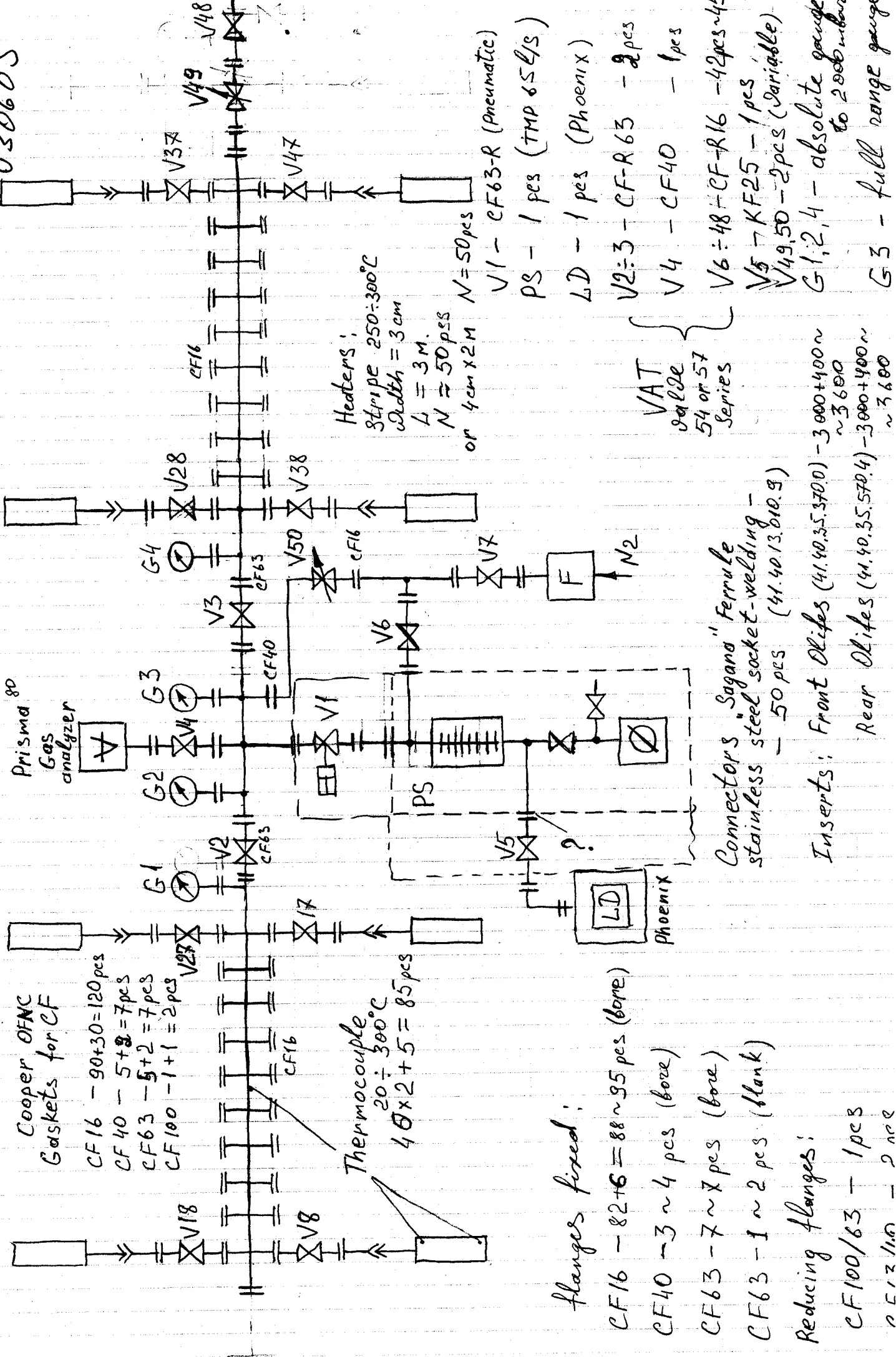


Pumping station

Bernel
030605



Cooper OFMC
Gaskets for CF
CF16 - 90+30 = 120 pcs
CF40 - 5+8 = 7 pcs
CF63 - 5+2 = 7 pcs
CF100 - 1+1 = 2 pcs

Thermocouple
20 ÷ 300°C
4 Ø x 2 + 5 = 85 pcs

flanges fixed:

CF16 - 82+6 = 88 ~ 95 pcs (bove)
CF40 - 3 ~ 4 pcs (bove)
CF63 - 7 ~ 8 pcs (bove)
CF63 - 1 ~ 2 pcs (blank)

Reducing flanges:

CF100/63 - 1 pcs
CF12/110 - 2 pcs

Connectors "Sagana" ferrule
stainless steel socket-welding -
- 50 pcs (41.40.13.010.9)

Inserts: Front Olites (41.40.35.570.0) - 3000+400 ~ 3600
Rear Olites (41.40.35.570.4) - 3000+400 ~ 3600

Headers:
8 stripe 250 ÷ 300°C
width = 3 cm
L = 3 M.
N = 50 pcs
or 4 cm x 2 M N = 50 pcs

VAT
valve
54 or 57
Series

V1 - CF63-R (Pneumatic)
PS - 1 pcs (TMP 65 L/S)
LD - 1 pcs (Phoenix)
V2: 3 - CF-R 63 - 2 pcs
V4 - CF40 - 1 pcs
V6: 48 - CF-R16 - 42 pcs ~ 45
V5 - KF25 - 1 pcs
V49, 50 - 2 pcs (Variable)
G1, 2, 4 - absolute gauge
to 2000 mbar
G3 - full range gauge