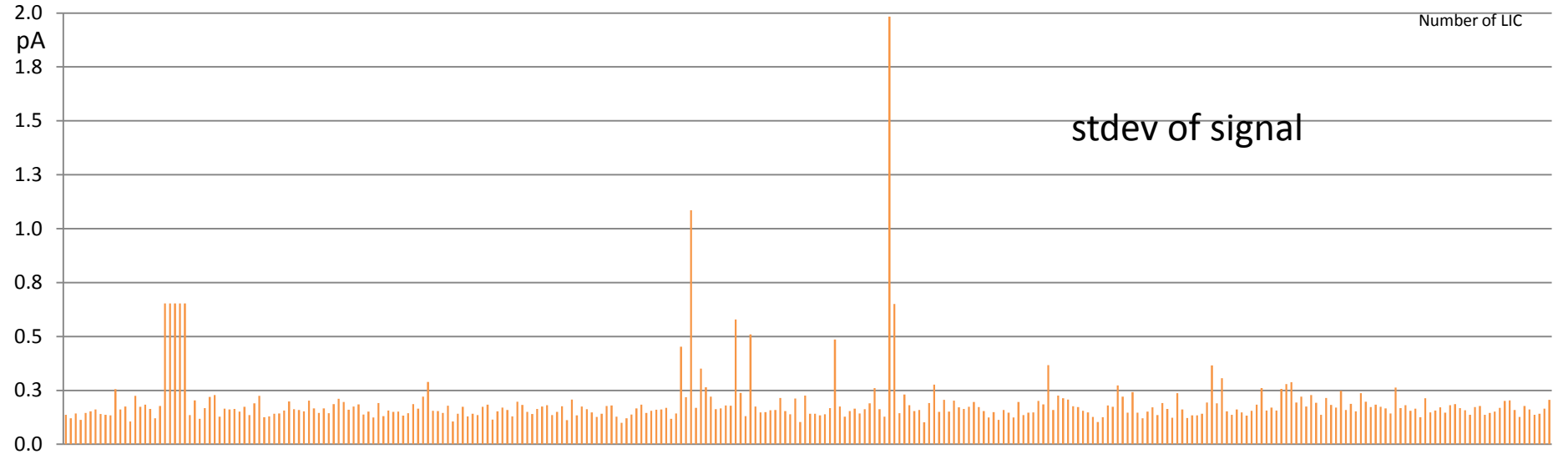
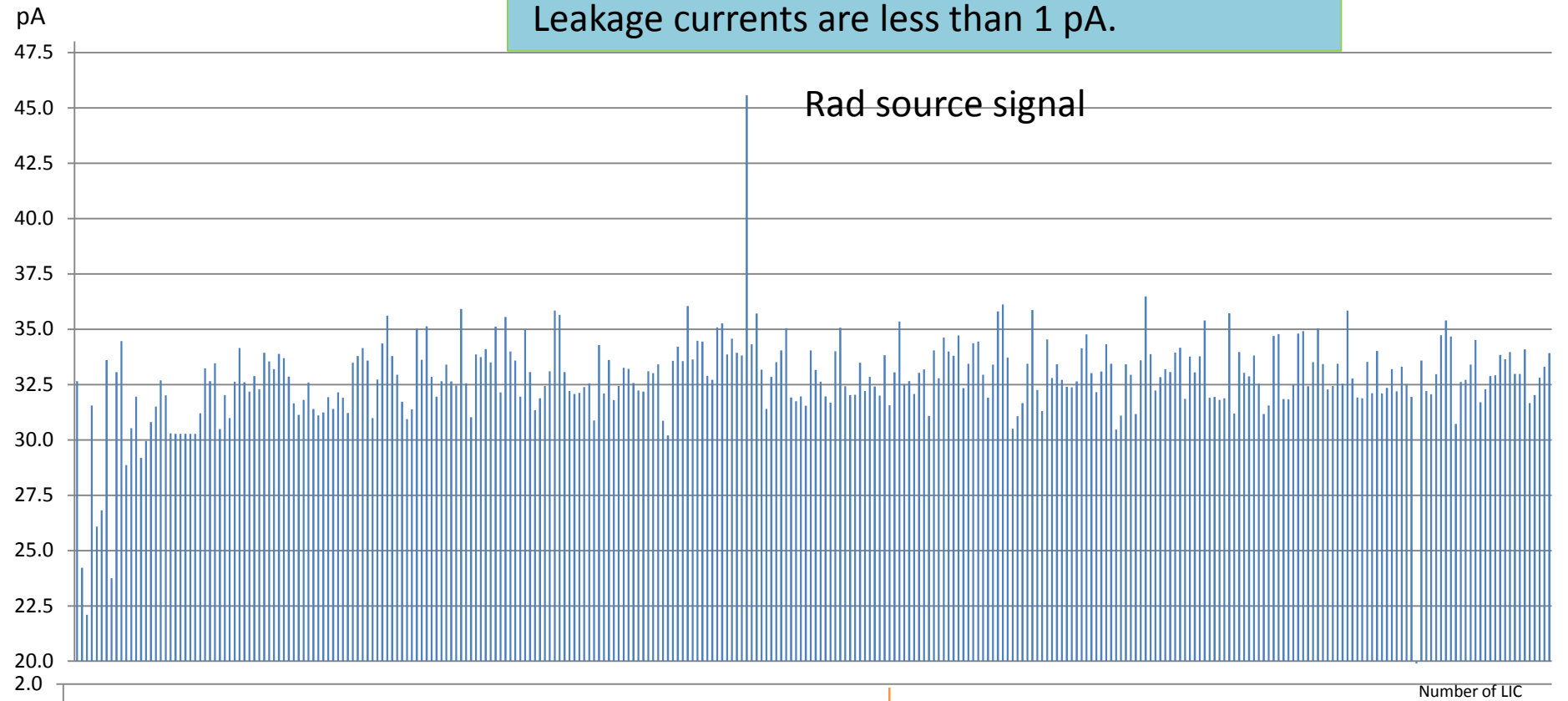


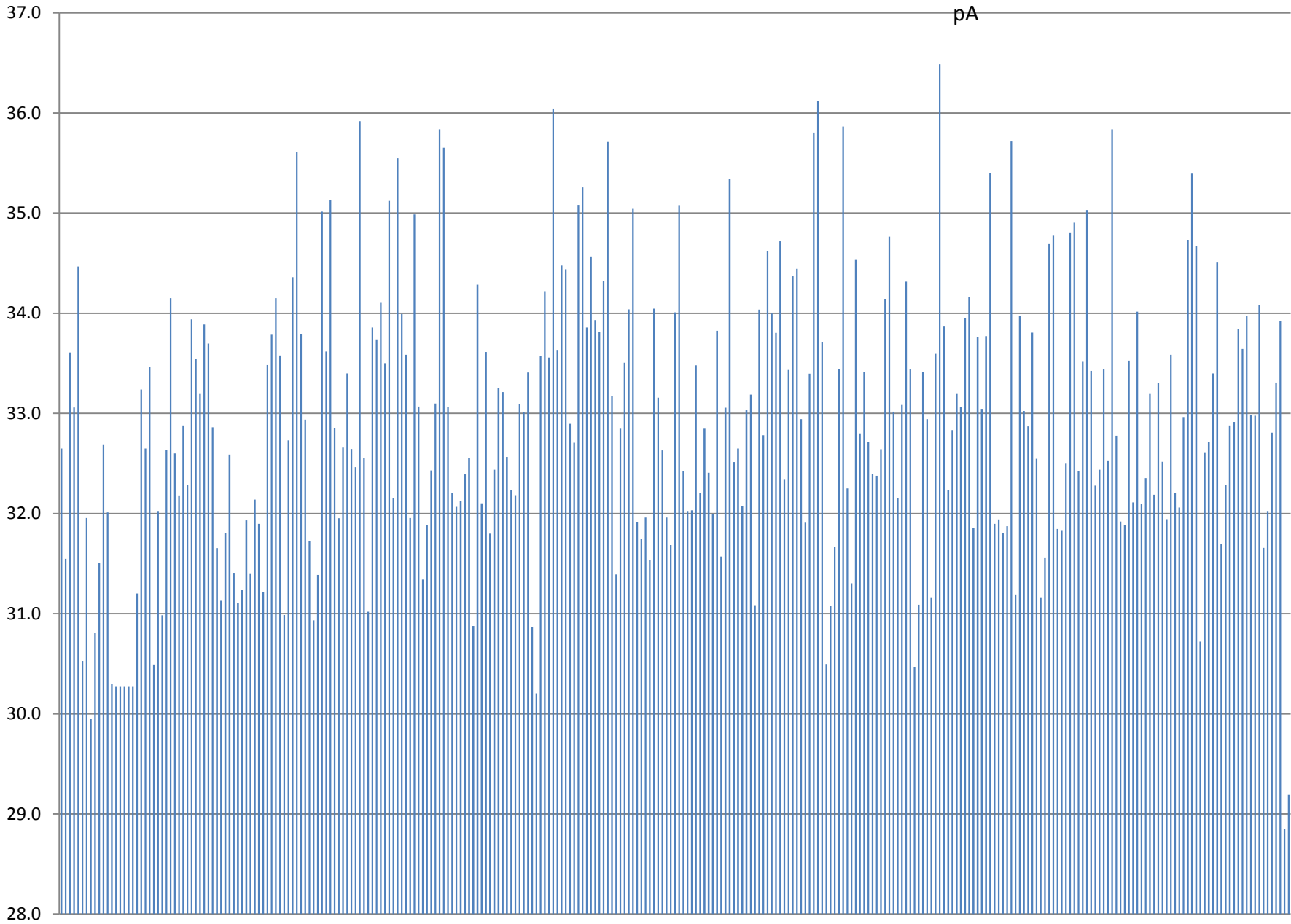
LIC measurements at GIF

Overview for 300 LICs signals and stedv of signal.
Leakage currents are less than 1 pA.

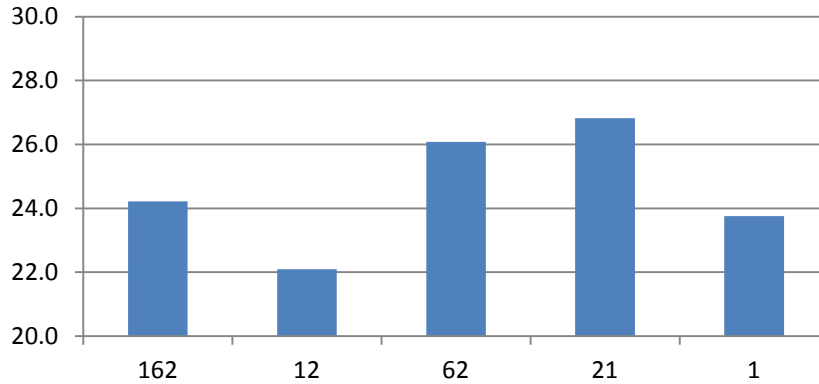


Rad source signal for LICs except 5 LICs with RS<27 pA , 1 LIC with RS=45.6; 1 LIC with RS =0.8

pA



A) 5 LICs with RS signal 22-26 pA, twice measured



Serial Number	RS signal (pA)	Stdev	Batch#	Shieldings
162	24.2	0.1	19 (last) Refilling	1
12	22.1	0.1	19 (last) Refilling	2
62	26.1	0.1	19 (last) Refilling	2
21	26.8	0.2	19 (last) Refilling	2
1	23.8	0.1	19 (last) Refilling	1

B) 1 LIC with TS signal > 40 pA, twice measured

Serial Number	RS signal (pA)	Stdev	Batch#	Shieldings
6	40.5-45.6	0.2	18 Refilling	2

C) It's not clear, twice measured

Serial Number	RS signal (pA)	Stdev	Batch#	Shieldings
218	0.8	0.2	11 One filling	1