



UNI EN 9001 2000

# novacavi<sub>spa</sub>

Via Martiri di Cefalonia,1 I-20068 Peschiera Borromeo - Milano - Italy  
Tel.: +39 (2) 55.38.32.1 Fax: +39 (2) 54.72.354 e-mail: info@novacavi.it

## TEST REPORT N°OC 47\_09-20

**Customer:** CERN DIVISION DES FINANCES  
**Customer Order:** CA 1496029  
**Cable type:** COAX CBRH50 50 OHM ( POLYIMMIDE ) IEC 60332-3-24 CERN IS23 RED  
**Novacavi Code:** 1HRS282  
**Specification:** 1HRS282  
**Quantity required:** 1000 m **Quantity supplied:** 553 m + 503 m

Visual inspection and dimensional tests	Requested	Measured
<b>Coax 50 OHM:</b>		
Bare Copper (strands x diameter mm)	7X0.30	7X0.30
Several layers of polyimide tapes		
Nominal diameter (mm)	3.5±0.2	3.52÷3.55
<b>Screen</b>		
Tinned copper braid overall shield, wire diameter 0,15 mm, coverage 95%		
Nominal diameter (mm)	4.1	4.12÷4.16
<b>Outer sheath</b>		
Two layers of polyimide tapes 0,05 mm, overlap 50% colour red		
Nominal diameter (mm)	4.50	4.52÷4.55

**Marking**  
 CERN - CBRH50 - NOVACAVI - ZERO HALOGEN

### ELECTRICAL TESTS

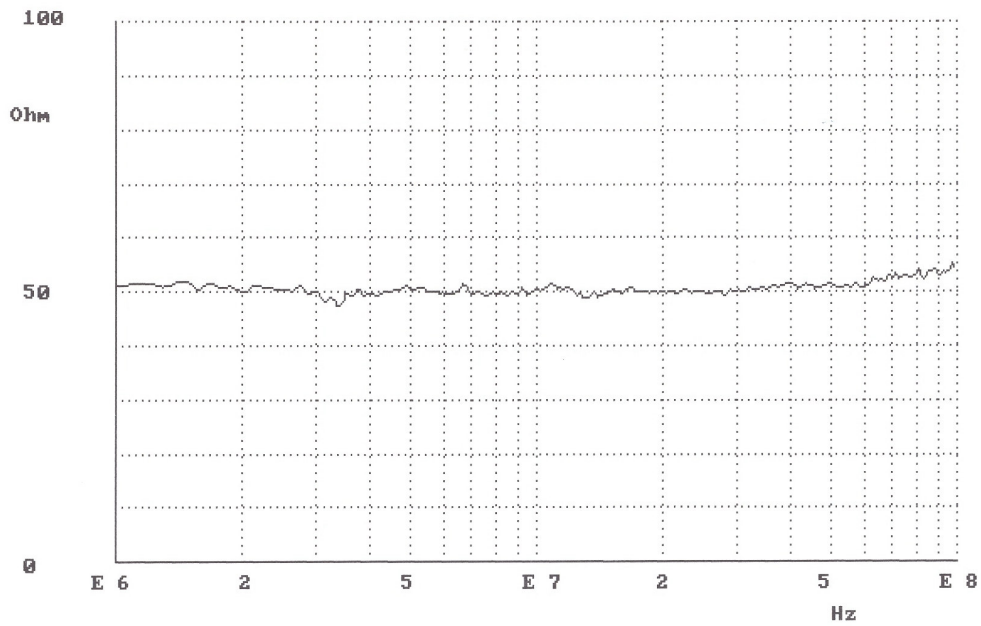
Electrical resistance inner conductor @20°C Ohm/km	< 38.40	34.53
Electrical resistance outer conductor @20°C Ohm/km	< 9.6	8.11
Nominal capacitance (pF/m)	123	116; 117
Nominal Impedance (ohm)	50	See fig. 1
Nominal calculated attenuation (db/100 m):		
@ 1 Mhz	1.4	1.4 (See fig. 2)
@ 10 Mhz	5.2	5.1 (See fig. 2)
@ 100 Mhz	22	- (See fig. 2)

**Test voltage:**  
 Conductors/Screen 10 kV ac x 10 min Passed

**FIRE TEST**  
 IEC 60332-1 Passed

Date: 03/04/2009

Quality Control  
Dr. Davide Mandelli



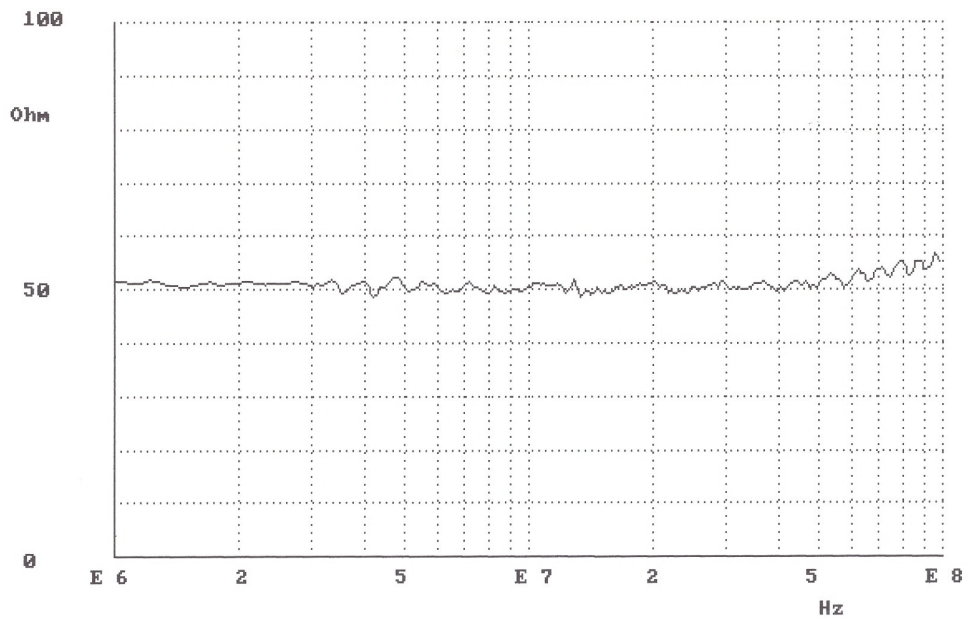
tipo Misura: IMPEDENZA (Ohm)

Codice Cavo: 1HRS 282

Capacità (pF/m): 116

Lunghezza Cavo (m): 553

Cod. Fab.:



tipo Misura: IMPEDENZA (Ohm)

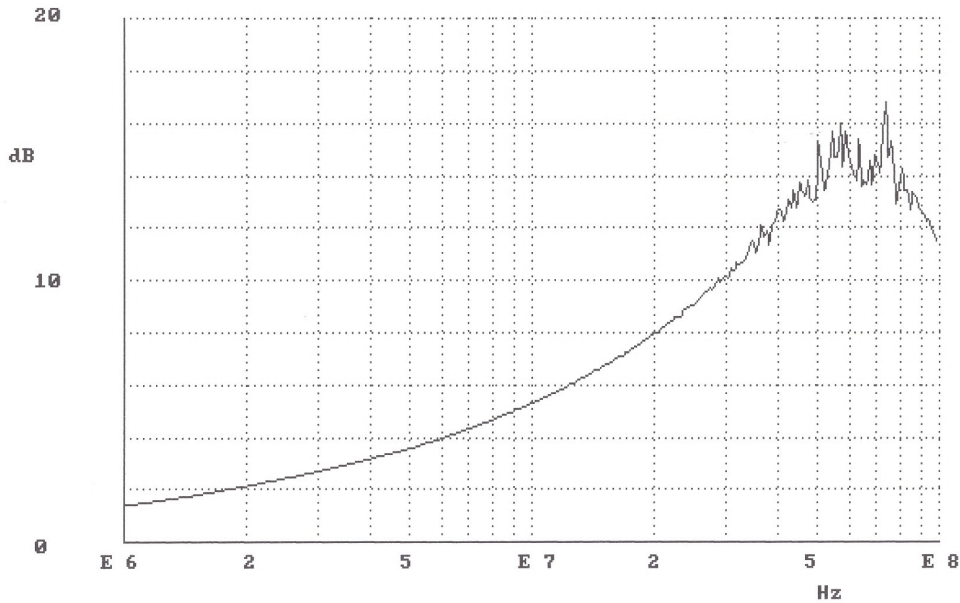
Codice Cavo: 1HRS 282

Capacità (pF/m): 117

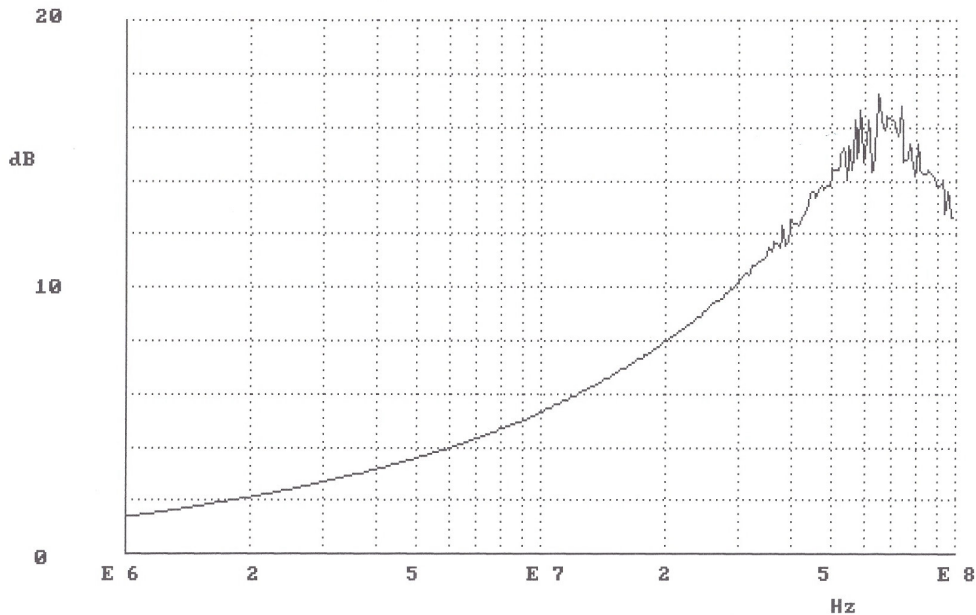
Lunghezza Cavo (m): 503

Cod. Fab.:

fig. 1



Tipo di misura: ATTENUAZIONE (dB/100m): cavo terminato su 50 (Ohm)  
 Codice Cavo: 1HRS 282 Lunghezza bobina in prova (m): 553  
 Capacità (pF/m): 116 Cod. di fabbrica: -----



Tipo di misura: ATTENUAZIONE (dB/100m): cavo terminato su 50 (Ohm)  
 Codice Cavo: 1HRS 282 Lunghezza bobina in prova (m): 503  
 Capacità (pF/m): 117 Cod. di fabbrica: -----

fig.2