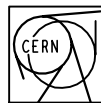


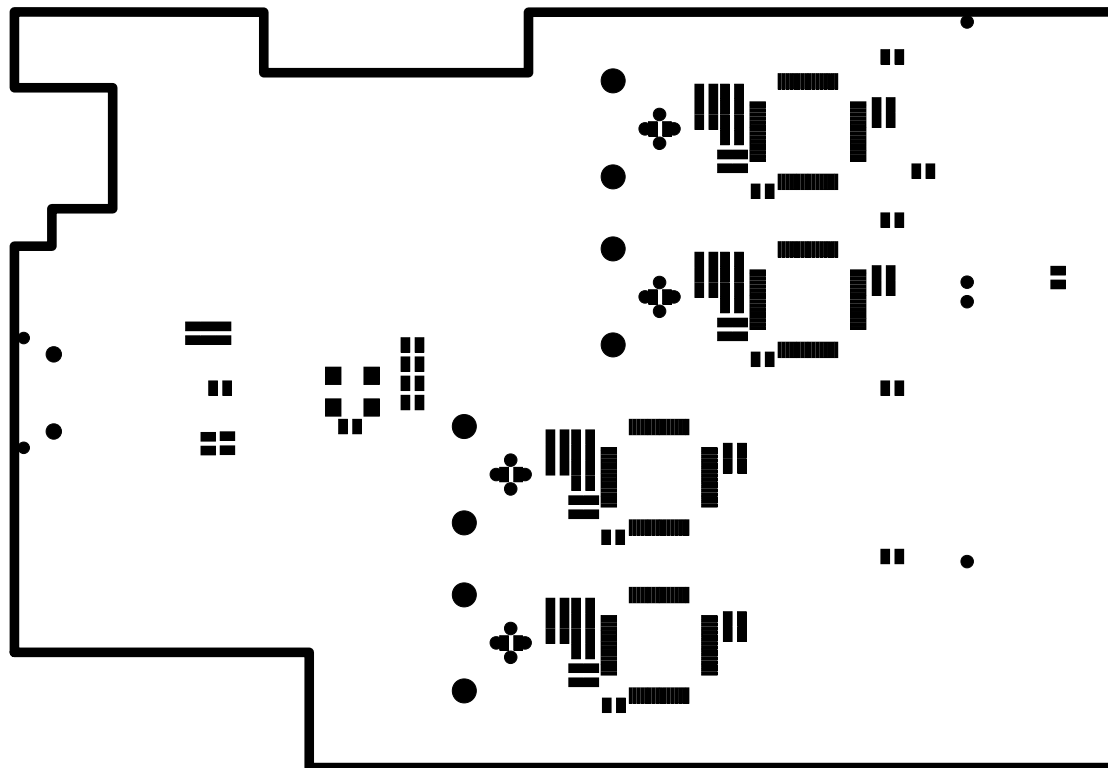
BLM MEZZANINE
EDA-00780-V2



TS/DEM

EDA-00780-V2		INDICE	NBRE DE COUCHE : 4
		-	EP. DU CUIVRE : 35u
DESS	CEGELEC JMC		EP. DU CIRCUIT : 16/10e
DATE	23/05/2005		MATIERE DU CI : EPOXY

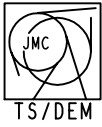
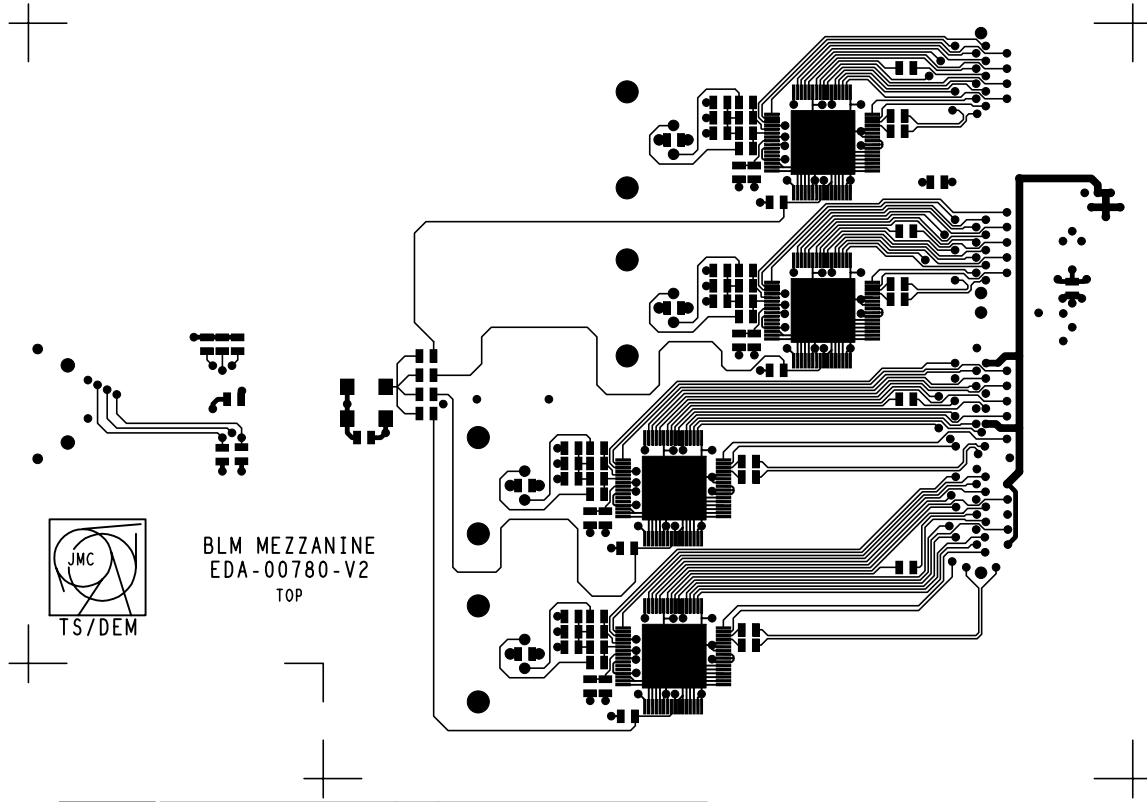
SERIGRAPHIE TOP



TS/DEM

EDA-00780-V2		INDICE -	NBRE DE COUCHE : 4
DESS	CEGELEC JMC		EP. DU CUIVRE : 35u
DATE	23/05/2005		EP. DU CIRCUIT : 16/10e
			MATIERE DU CI : EPOXY

LAQUE ARRET DE SOUDURE C-SIDE



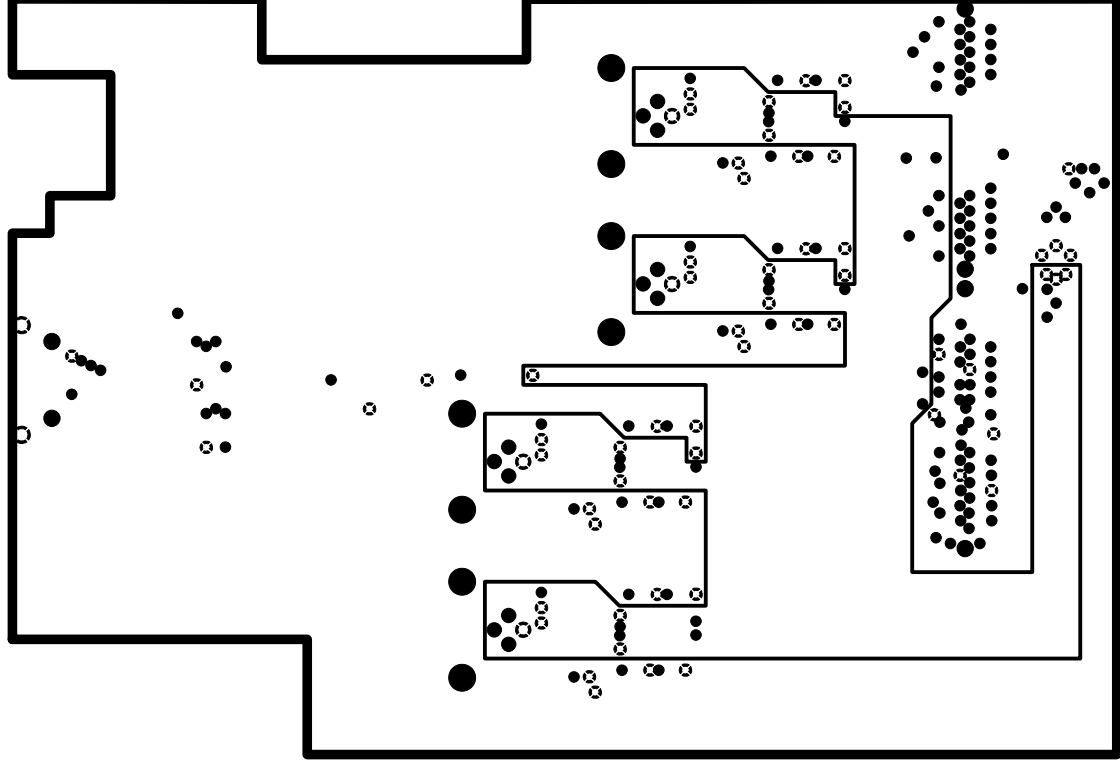
BLM MEZZANINE
EDA-00780-V2
TOP



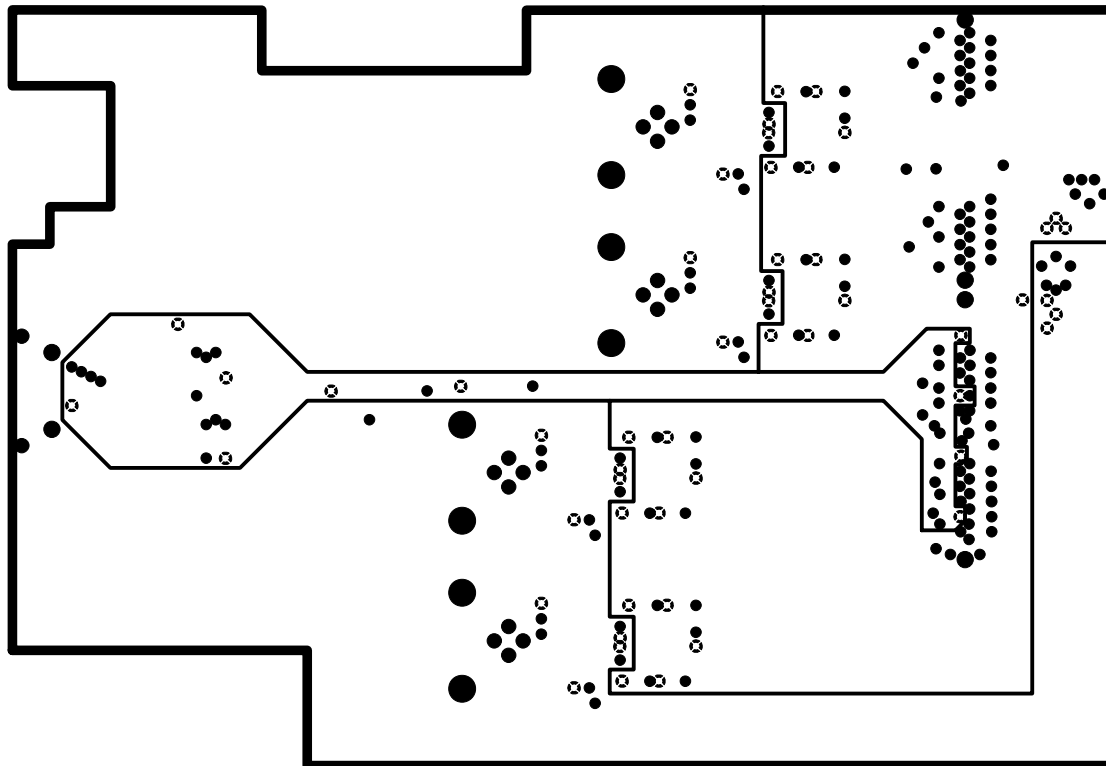
EDA-00780-V2		INDICE	NBRE DE COUCHE : 4
		-	EP. DU CUIVRE : 35u
DESS	CEGELEC JMC		EP. DU CIRCUIT : 16/10e
DATE	23/05/2005		MATIERE DU CI : EPOXY

FACE COMPOSANTS

1			
---	--	--	--



DATE	33\02\5002	TSYDEM		PLAN END	<table border="1"> <tr> <td>2</td> <td></td> <td></td> </tr> </table>	2		
2								
DESS	CEGELEC JMC	EDA-00780-V5	INDICE	-				
MATIERE DU CI	: EPOXY							
EP. DU CIRCUIT	: 16\10e							
EP. DU CUIVRE	: 32u							
NBRE DE COUCHE	: 4							

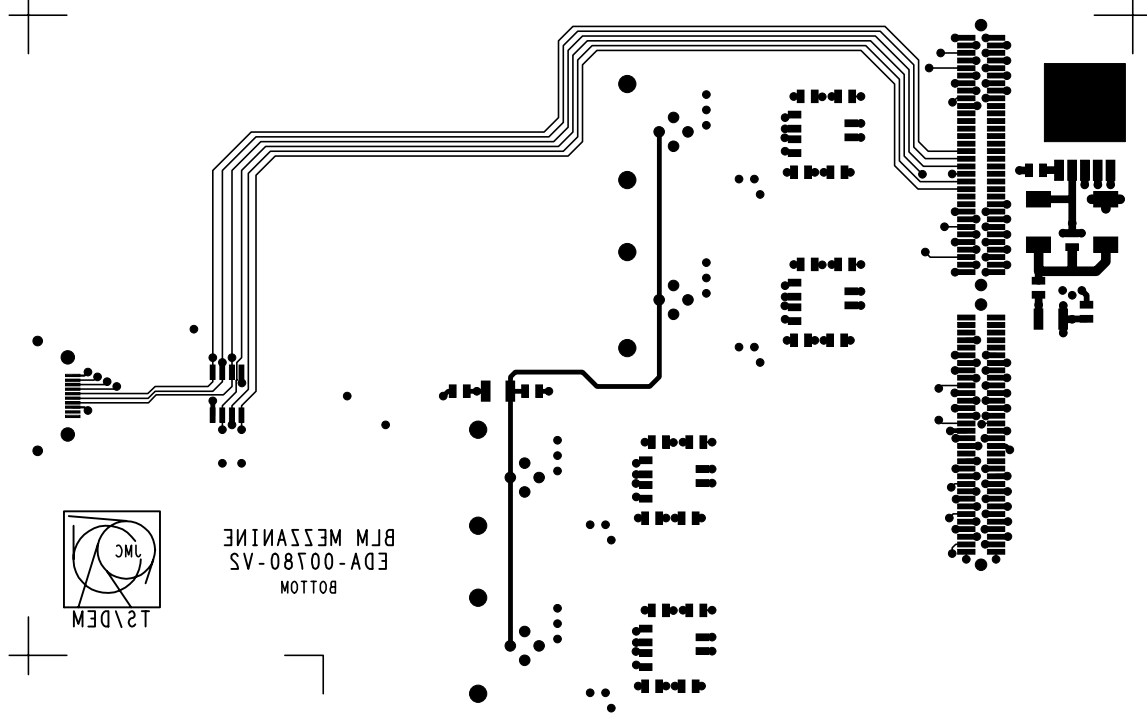


TS/DEM

EDA-00780-V2		INDICE	NBRE DE COUCHE : 4
		-	EP. DU CUIVRE : 35u
DESS	CEGELEC JMC		EP. DU CIRCUIT : 16/10e
DATE	23/05/2005		MATIERE DU CI : EPOXY

PLAN VDD/P2V5/P3V3

		3	
--	--	---	--

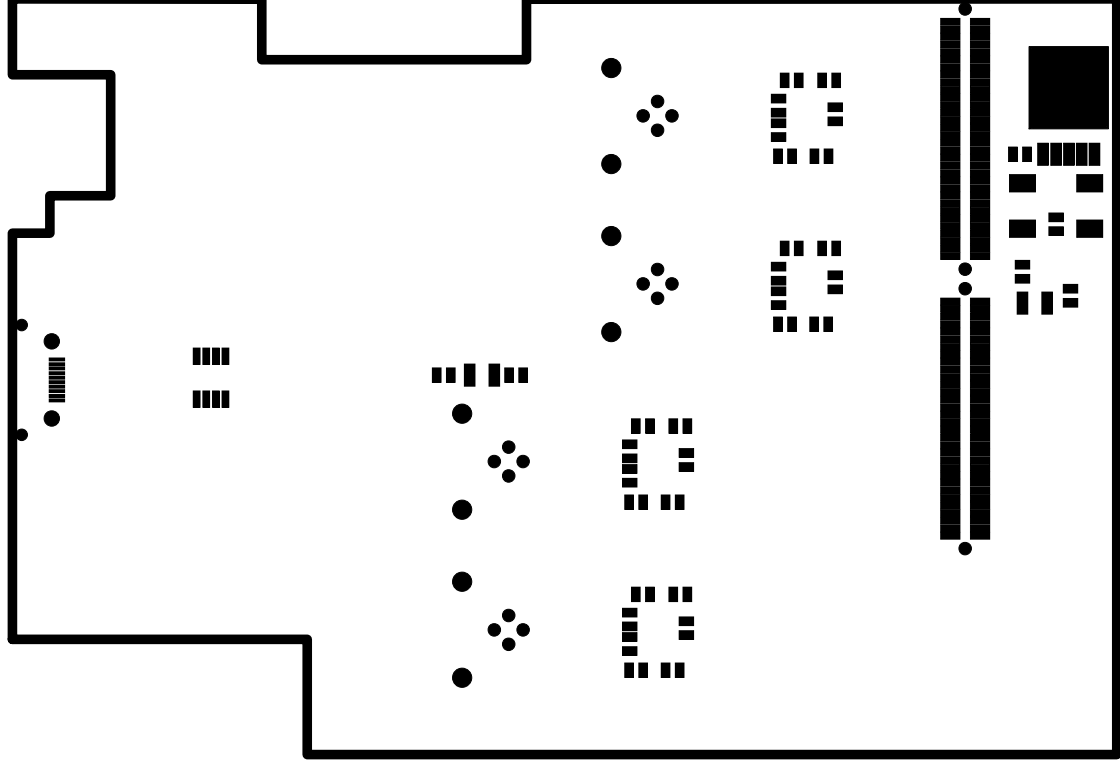


EDA-00780-V5
BLM MESSAINE
BOTTOM

DATE	S3\02\5002	TSDM	
DESS	CEGELEC JMC	FACE SONDURES	
EP. DU CIRCUIT :	16\10e		
EP. DU CUIVRE :	32u		
MBRE DE COUCHE :	4		
INDICE		-	
EDA-00780-V5			



4

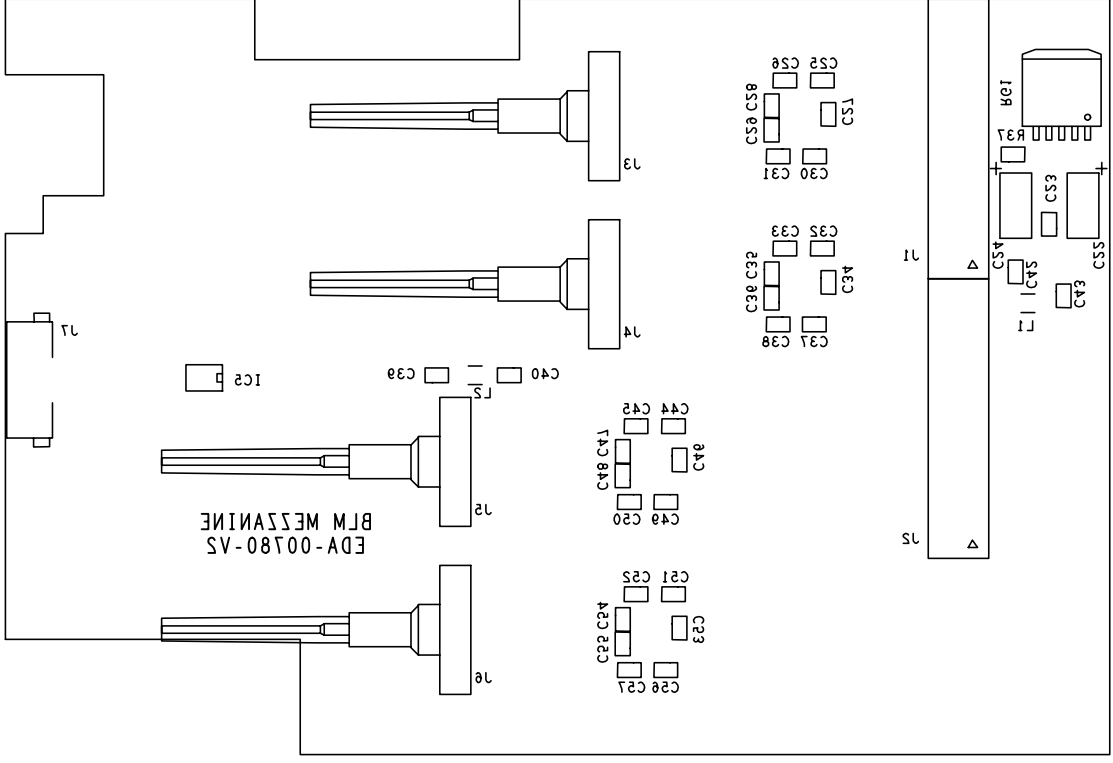


DATE	33\02\5002	INDICE	-
DESS	CEGELEC JMC	EP. DU CUIVRE :	32u
		EP. DU CIRCUIT :	16\10e
MATIERE DU CI :	EPOXY	MBRE DE COUCHE :	4



LAQUE ARRET DE SONDURE W-2IDE

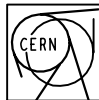
TSDM



DATE	33\02\5002	MATIERE DU CI : EPOXY
DESS	CEGELEC JMC	EP. DU CIRCUIT : 16\10e
	EDA-00180-VS	EP. DU CUIVRE : 32u
	-	MBRE DE COUCHE : 4
		INDICE



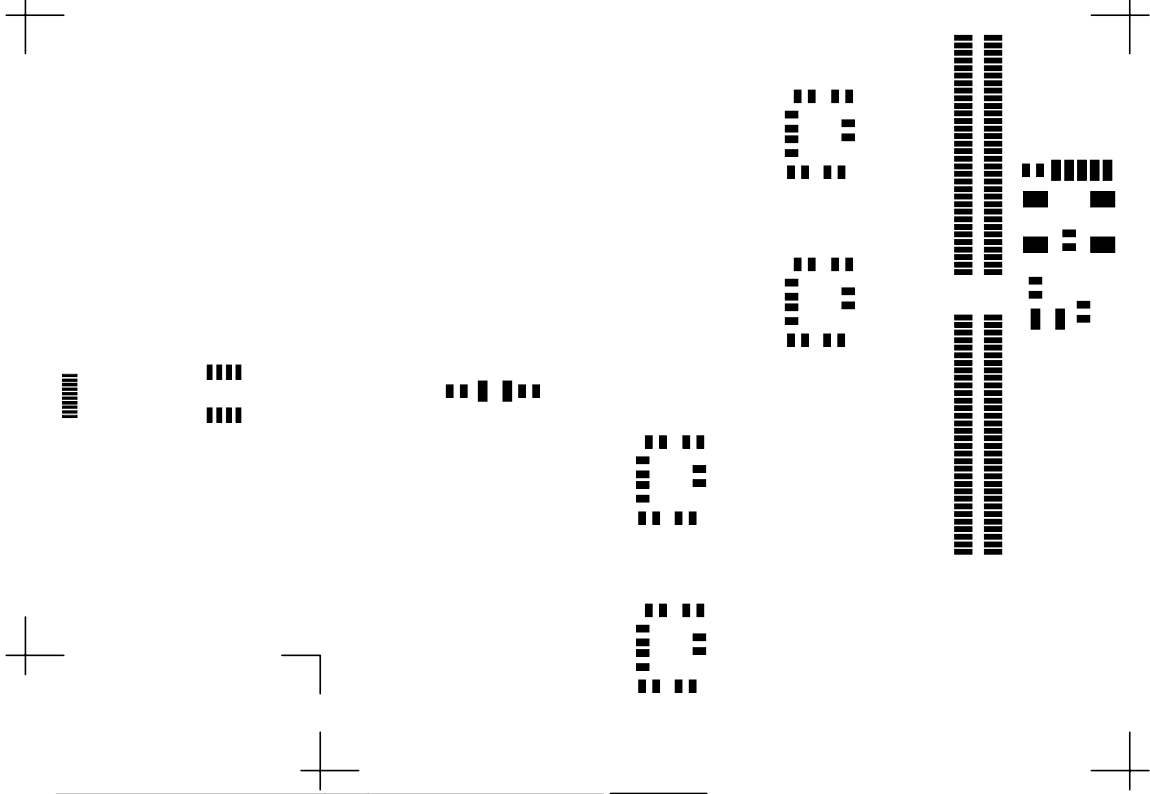
SERIEGRAPHIE BOTTOM

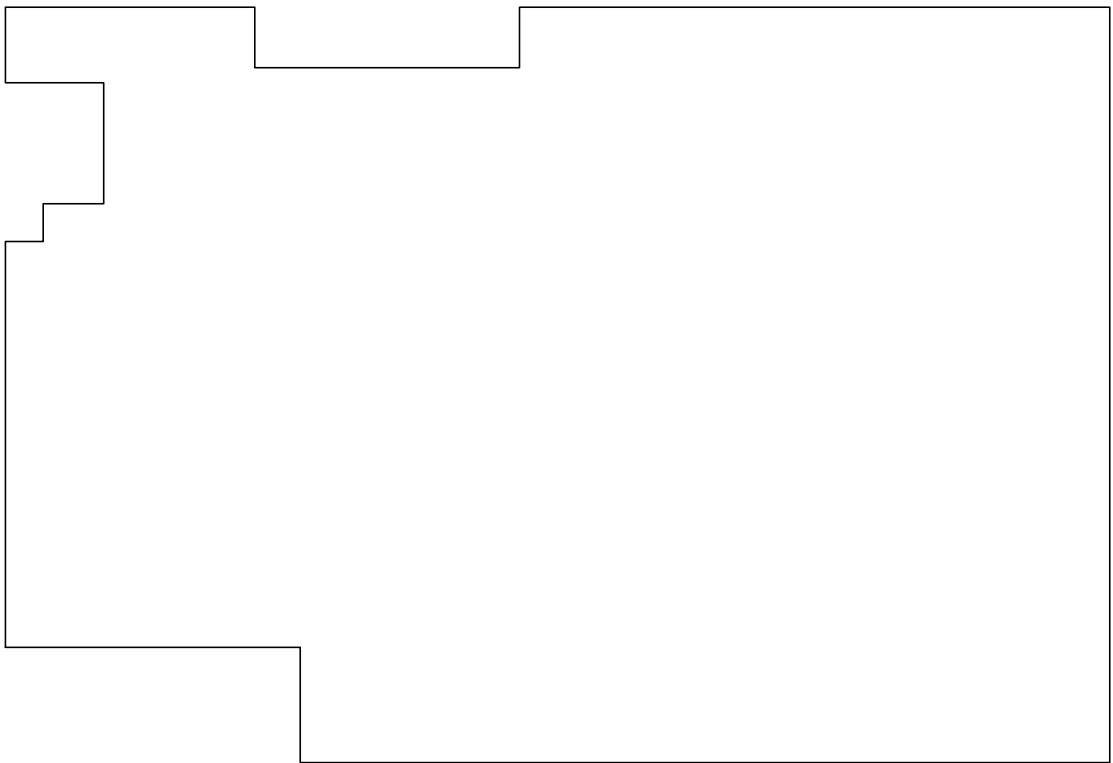


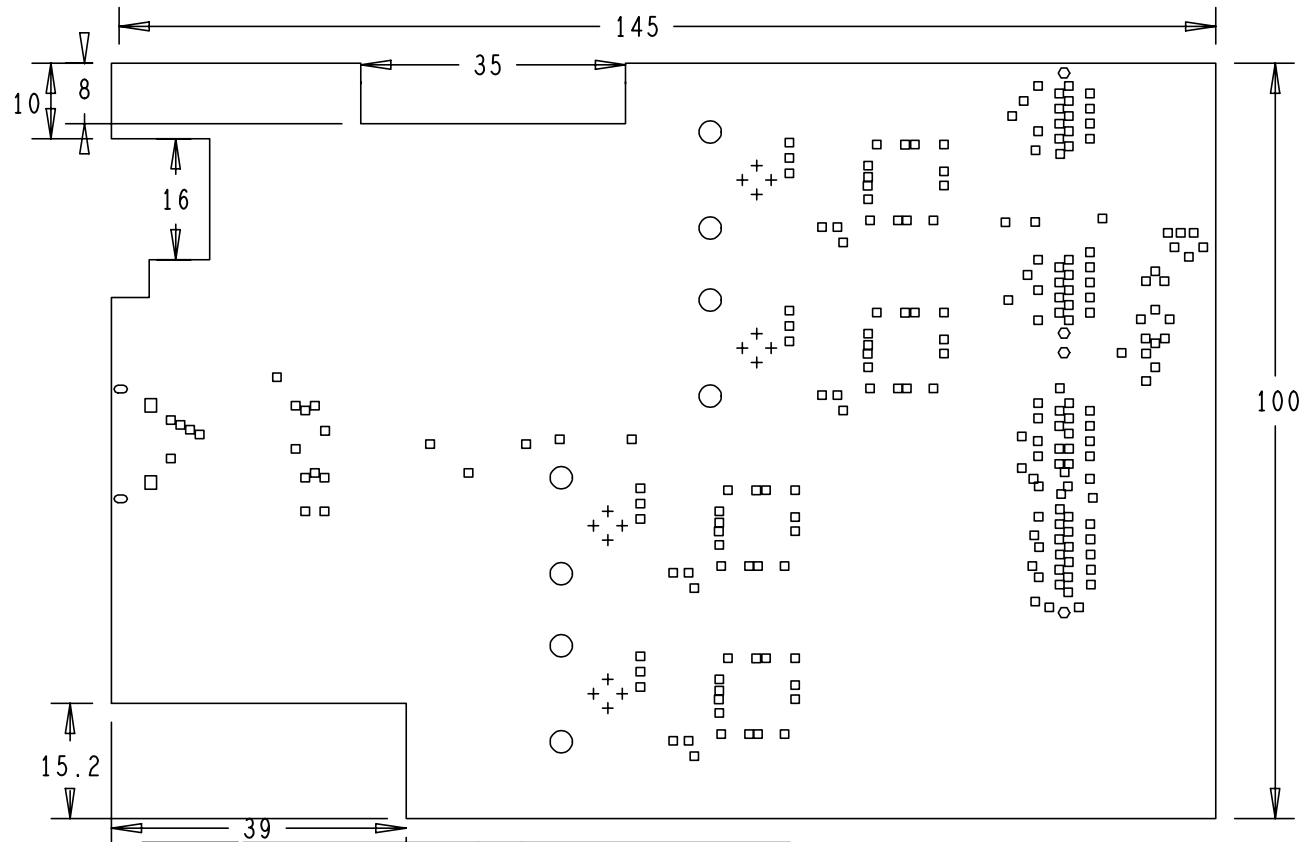
TS/DEM

EDA-00780-V2		INDICE	NBRE DE COUCHE : 4
		-	EP. DU CUIVRE : 35u
DESS	CEGELEC JMC		EP. DU CIRCUIT : 16/10e
DATE	23/05/2005		MATIERE DU CI : EPOXY

DATE	S3\02\5002	TSDM	
DESS	CEGELEC JMC	CERN	
EP. DU CIRCUIT :	10\10e	-	
EP. DU CUIVRE :	32u	INDEXE	
MBRE DE COUCHE :	4	EDA-00780-V5	
MATIERE DU CI :	EPOXY		







TS/DEM

EDA-00780-V2		INDICE	NBRE DE COUCHE : 4
DESS	CEGELEC JMC	-	EP. DU CUIVRE : 35u
DATE	23/05/2005		EP. DU CIRCUIT : 16/10e
			MATIERE DU CI : EPOXY

METRIC DRILL LEGEND			
ALL UNITS ARE IN MILLIMETERS			
Figure	Dia.	TYPE	QTY
□	0.50	PLATED	213
+	0.80	PLATED	16
□	1.10	PLATED	2
○	1.20	PLATED	2
○	1.40	PLATED	4
○	2.20	PLATED	8