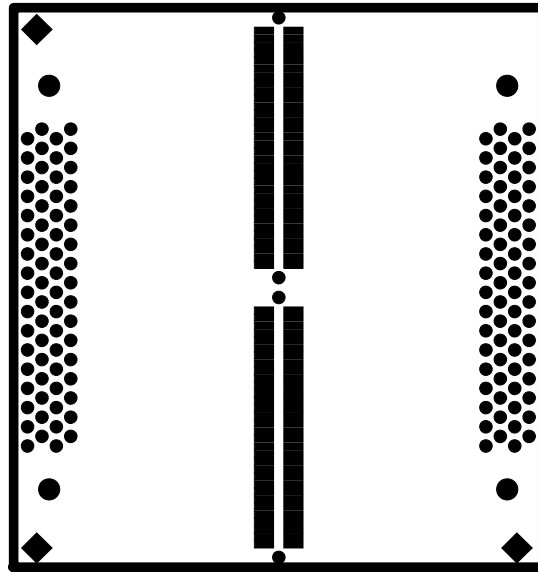



TS/DEM

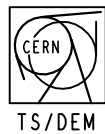
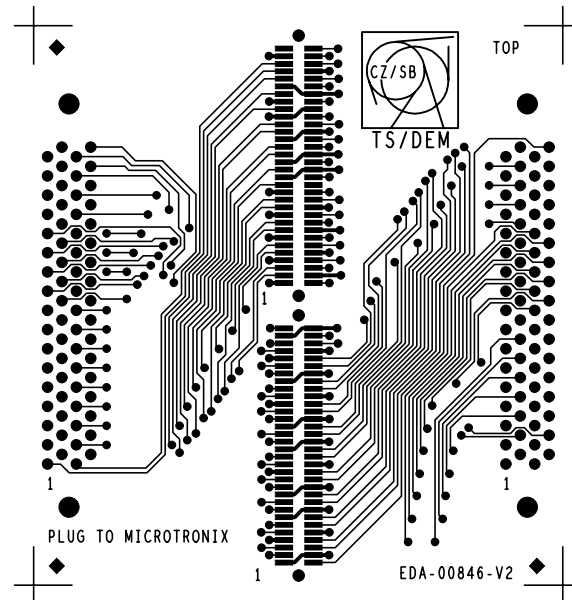
EDA-00846-V2		INDICE -	NBRE DE COUCHE : 4
DESS	ELECTROTECH SB		EP. DU CUIVRE : 35u
DATE	19/05/2005		EP. DU CIRCUIT : 16/10e
			MATIERE DU CI : EPOXY

SERIGRAPHIE TOP



 TS/DEM	EDA-00846-V2		INDICE -	NBRE DE COUCHE : 4
	DESS	ELECTROTECH SB		EP. DU CUIVRE : 35u
	DATE	19/05/2005		EP. DU CIRCUIT : 16/10e
				MATIERE DU CI : EPOXY

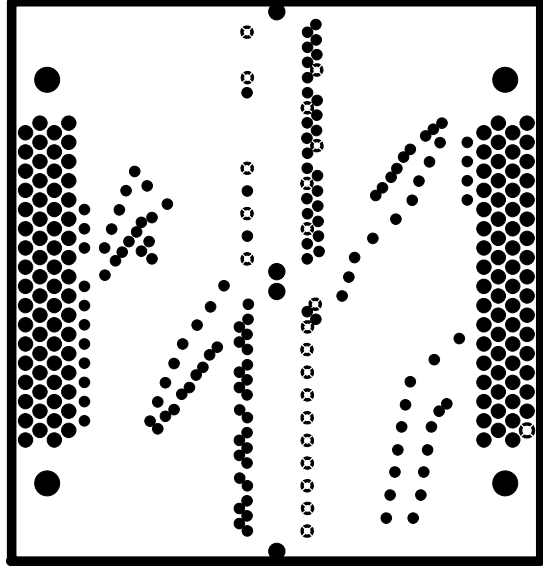
LAQUE ARRET DE SOUDURE C-SIDE



EDA-00846-V2		INDICE	NBRE DE COUCHE : 4
DESS	ELECTROTECH SB	-	EP. DU CUIVRE : 35u
DATE	19/05/2005		EP. DU CIRCUIT : 16/10e
			MATIERE DU CI : EPOXY

FACE COMPOSANTS

1			
---	--	--	--

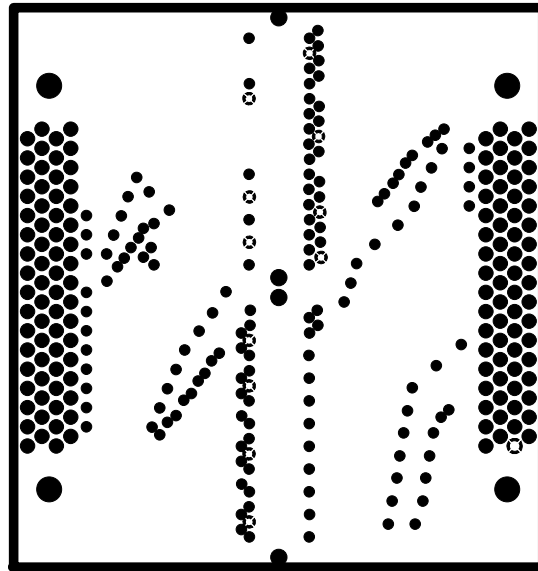



DATE	19\02\2002	MATIERE DU CI : EPOXY
DESS	ELECTROTECH 28	EP. DU CIRCUIT : 16\10e
	EDA-0084e-VS	EP. DU CUIVRE : 35u
	-	INDICE
		NBRE DE COUCHE : 4



PLAN GND

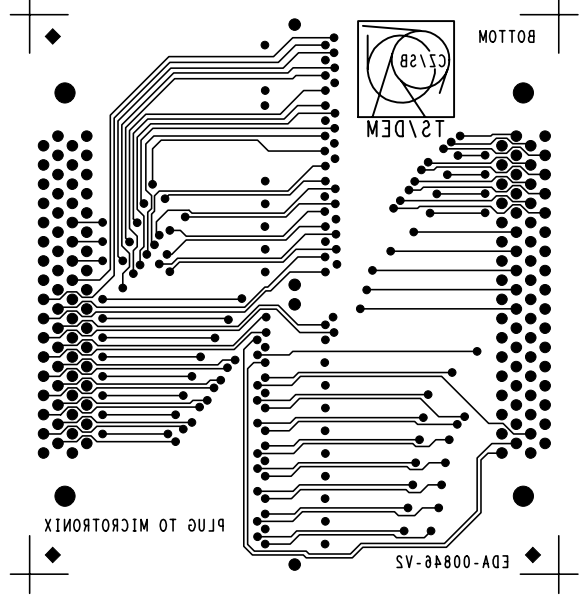
	2		
--	---	--	--



 TS/DEM	EDA-00846-V2		INDICE -	NBRE DE COUCHE : 4
	DESS	ELECTROTECH SB		EP. DU CUIVRE : 35u
	DATE	19/05/2005		EP. DU CIRCUIT : 16/10e
				MATIERE DU CI : EPOXY

PLAN P5V

		3	
--	--	---	--

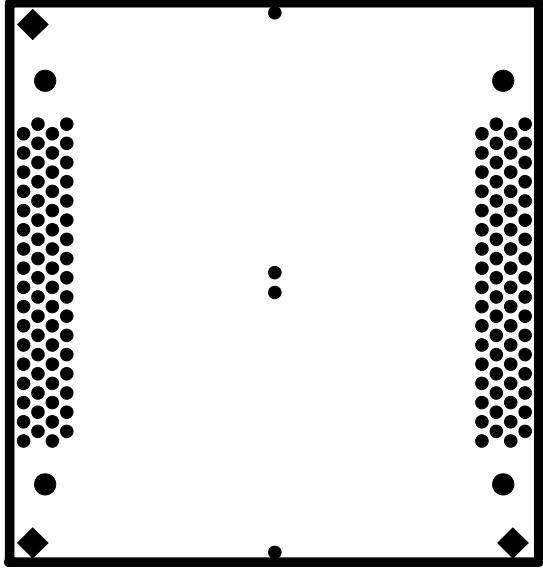


DATE	19\02\2002	MATIERE DU CI : EPOXY
DESS	ELECTROTECH 28	EP. DU CIRCUIT : 16\10e
	EDA-00848-VS	EP. DU CUIVRE : 35u
		INDICE
		NBRE DE COUCHE : 4



FACE SONDREES

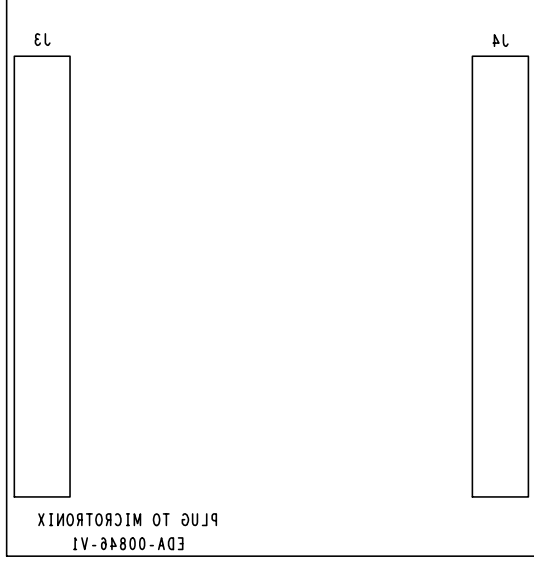
			4
--	--	--	---



DATE	19\02\5002	MATIERE DU CI	EPoxy
DESS	ELECTROTECH 28	EP. DU CIRCUIT	18\10e
		EP. DU CUIVRE	32e
		NBRE DE COUCHE	4



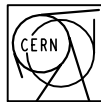
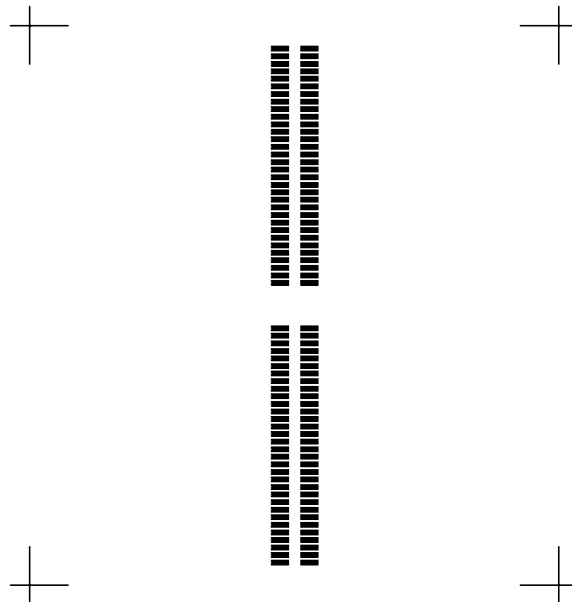
LAQUE ARRET DE SONDURE W-21DE



DATE	19\02\5002	MATIERE DU CI : EPOXY
DESS	ELECTROTECH 28	EP. DU CIRCUIT : 18\10e
	EDA-00848-VS	EP. DU CUIVRE : 32n
	-	INDICE
		NBRE DE COUCHE : 4



SERIGRAPHIE BOTTOM



TS/DEM

EDA-00846-V2	INDICE -	NBRE DE COUCHE : 4
DESS ELECTROTECH SB		EP. DU CUIVRE : 35u
DATE 19/05/2005		EP. DU CIRCUIT : 16/10e
		MATIERE DU CI : EPOXY

