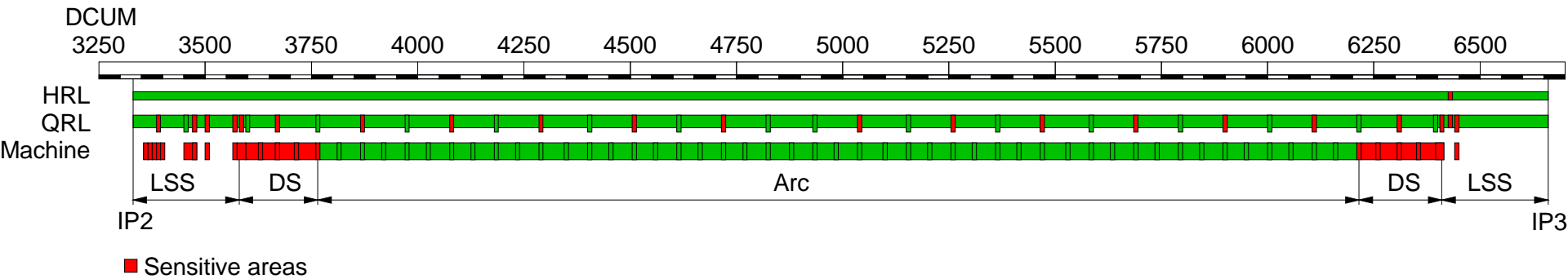


Annex 2 to EDMS 1406764 v1.4

**Sector 23:
Identification of “sensitive areas”
for helium spill**

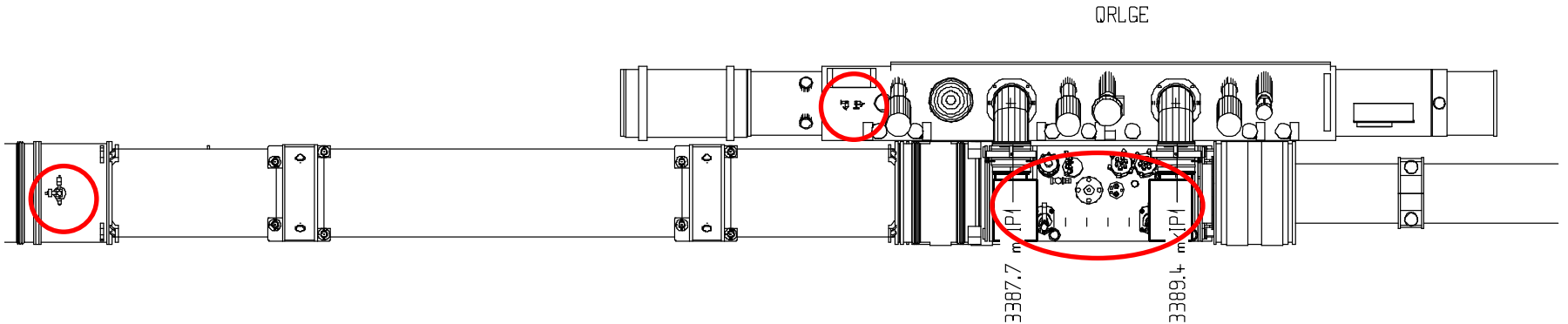
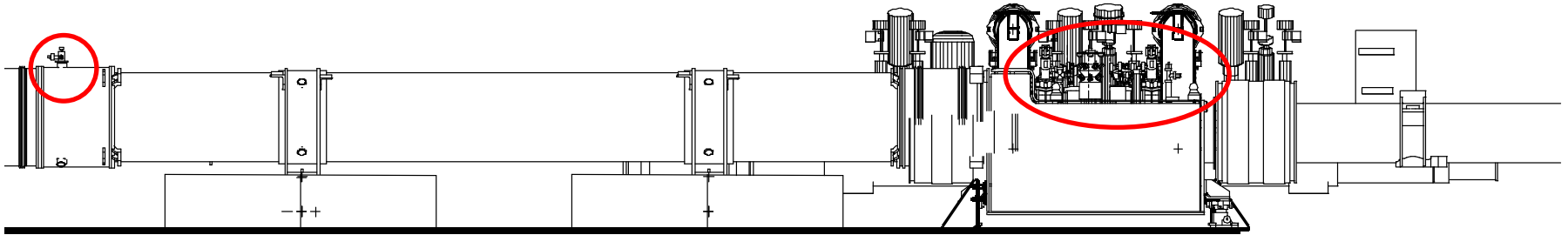
L. Tavian, 02 October 2014

Sector 23 overview



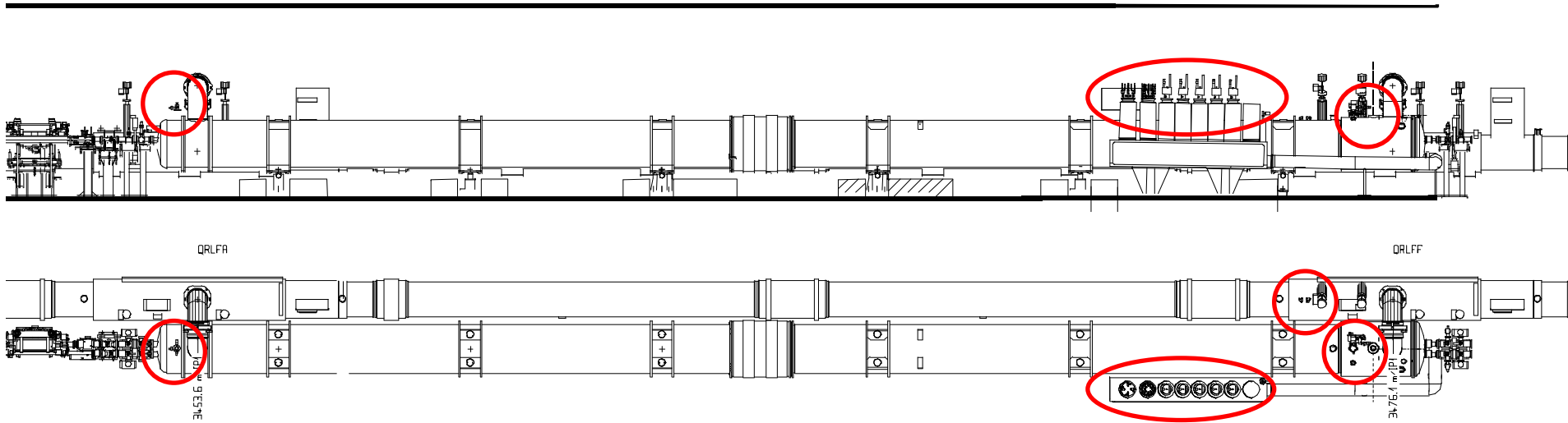
DFBXD R2 DCUM 3388 m

UJ26

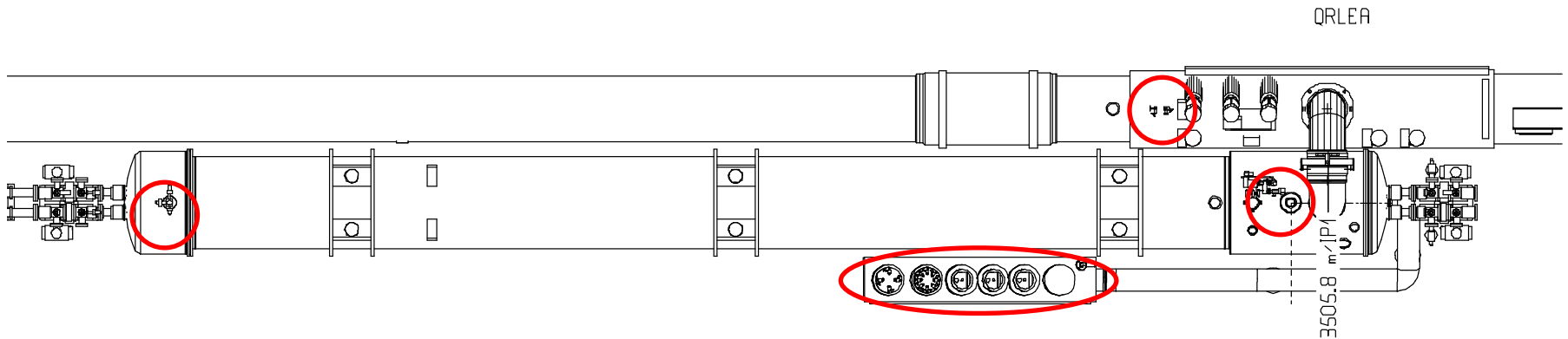
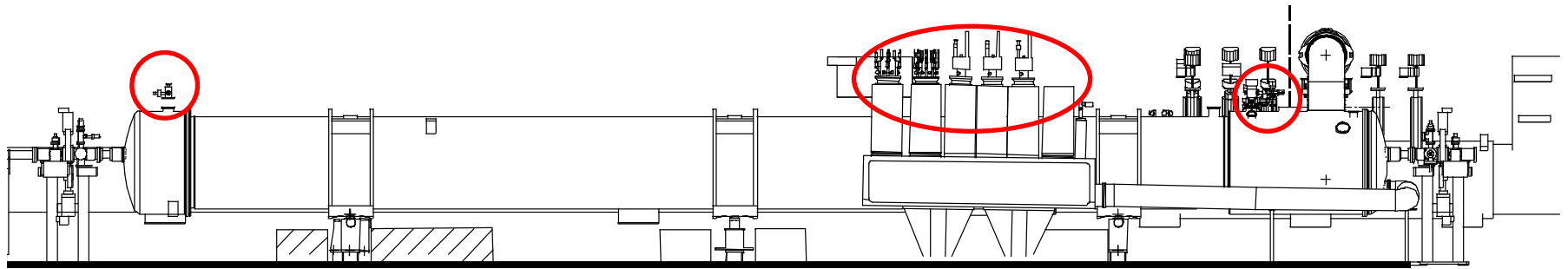


D2Q4R2 DCUM 3476 m

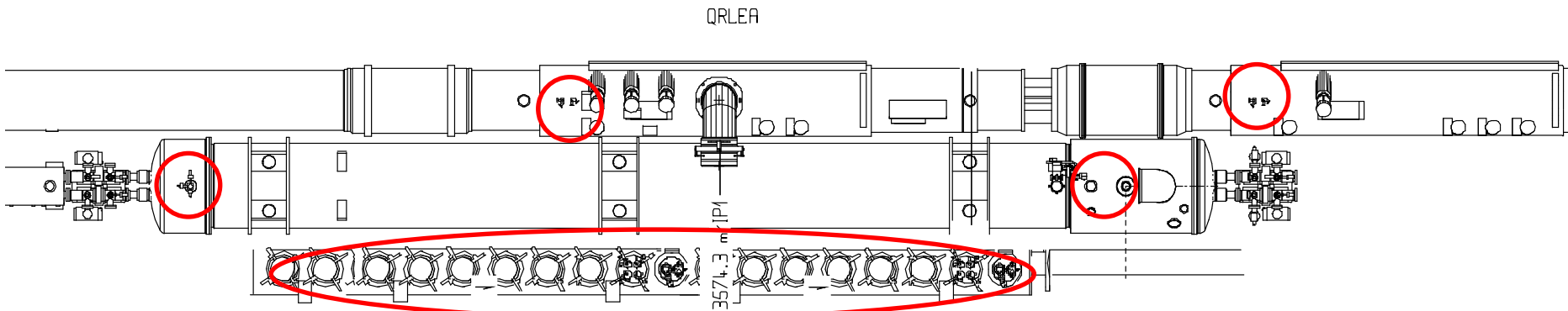
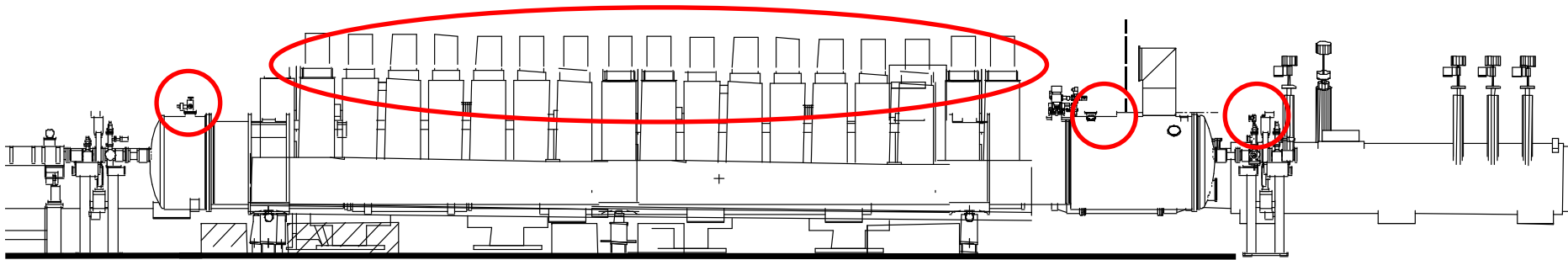
DFBMB



Q5R2 DCUM 3506 m DFBMC

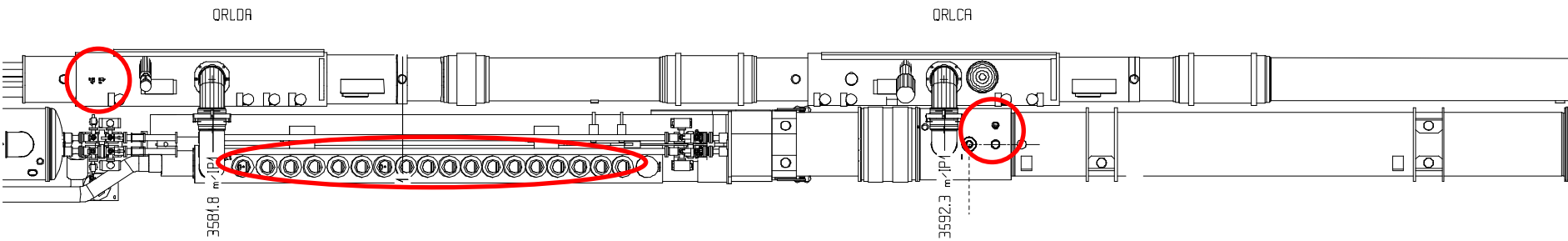
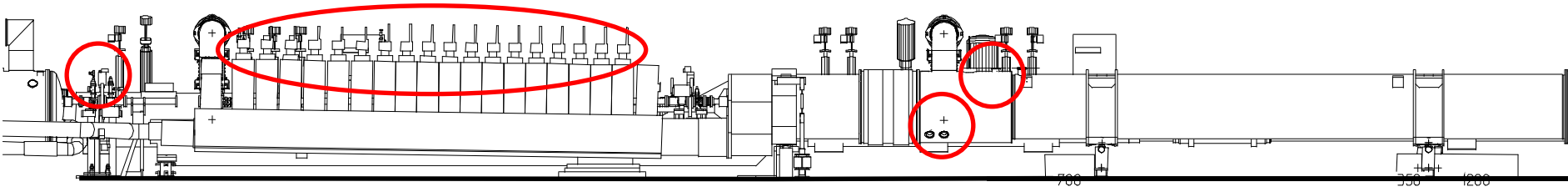


Q6R2 DFBAD-LCM DCUM 3574 m

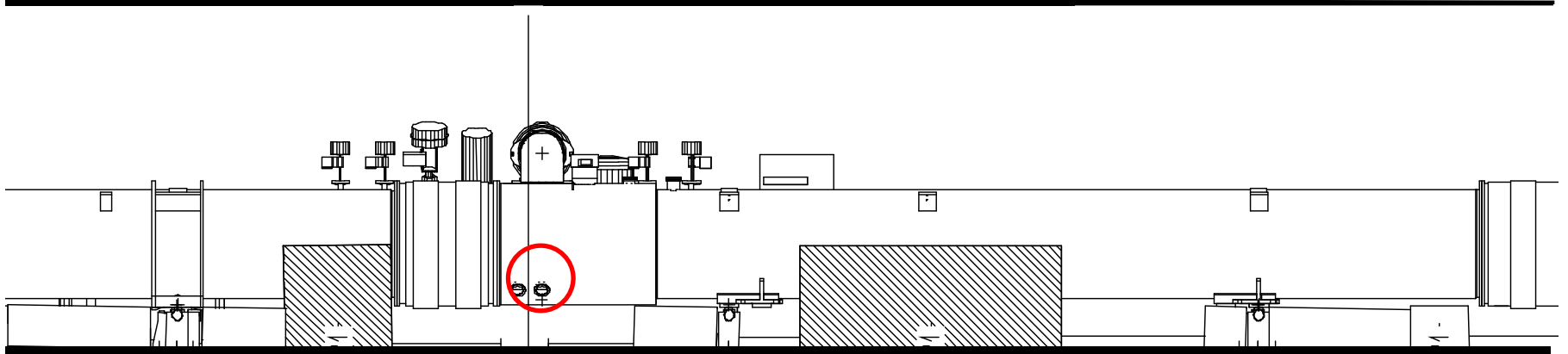


DFBAD-HCM R2 DCUM 3582 m

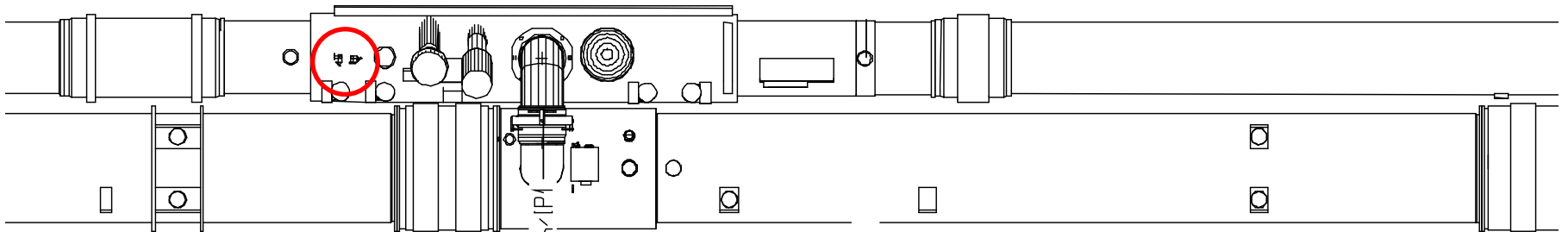
UJ27



Q9R2 DS DCUM 3673 m

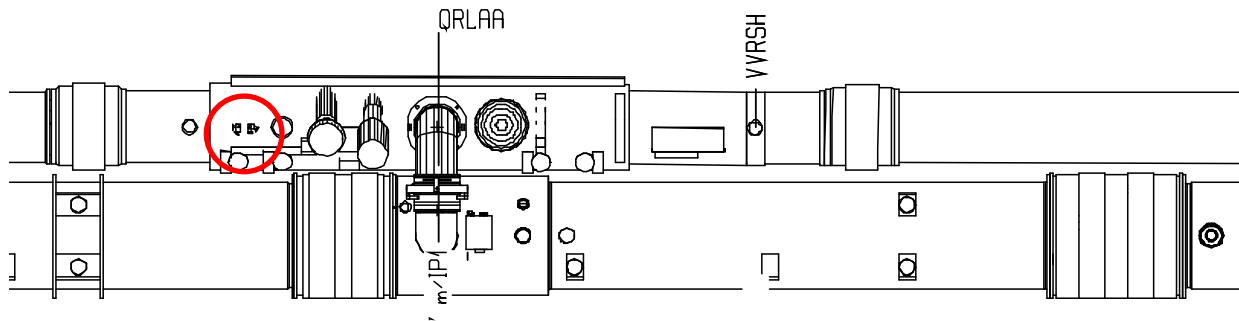
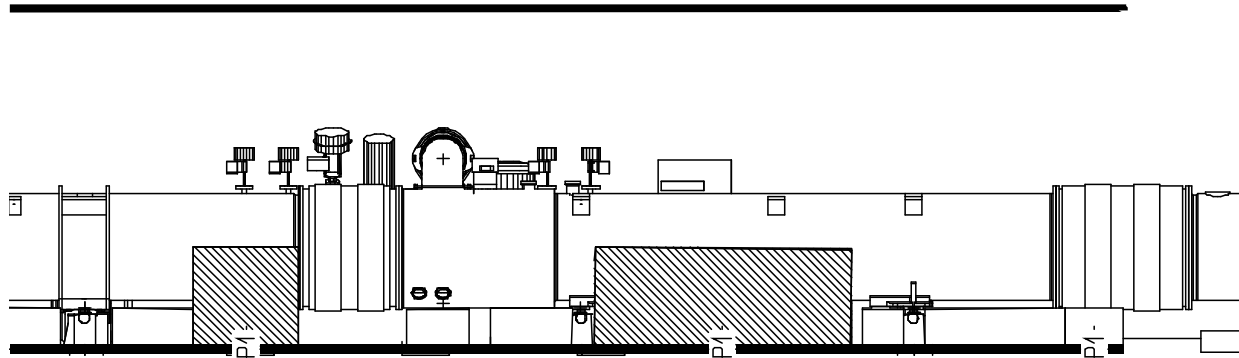


QRLBA



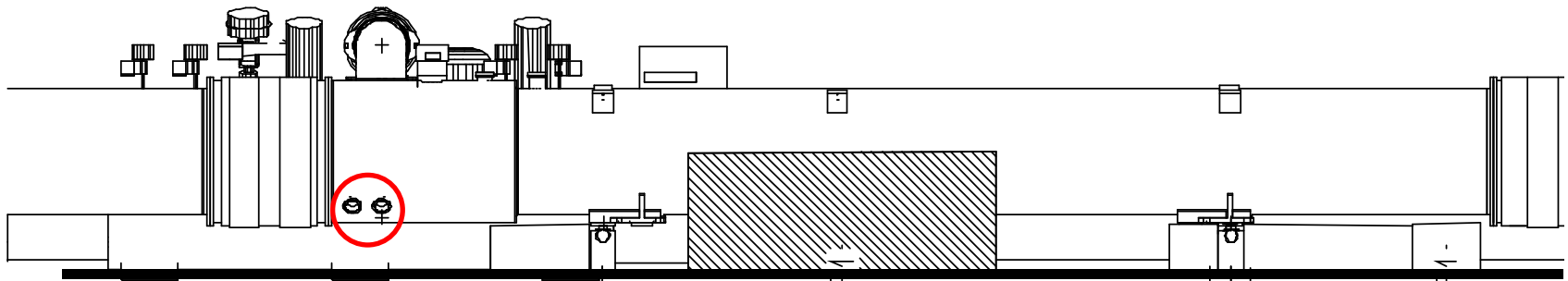
3672.8 m LPI

QRLAA service module in the Arc23

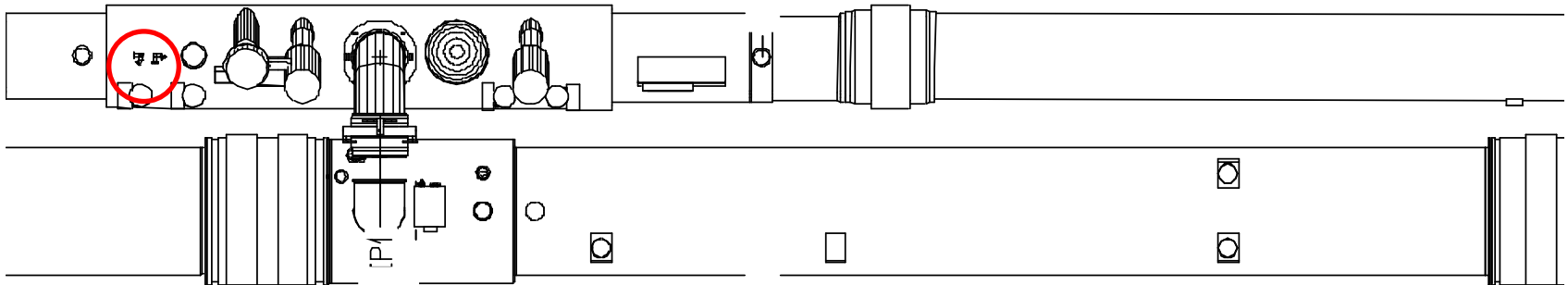


Q13R2	DCUM	3873	m
Q17R2	DCUM	4087	m
Q21R2	DCUM	4301	m
Q25R2	DCUM	4515	m
Q29R2	DCUM	4729	m
Q33L3	DCUM	5049	m
Q29L3	DCUM	5263	m
Q25L3	DCUM	5477	m
Q21L3	DCUM	5691	m
Q17L3	DCUM	5904	m
Q13L3	DCUM	6118	m

Q9L3 DS DCUM 6317 m

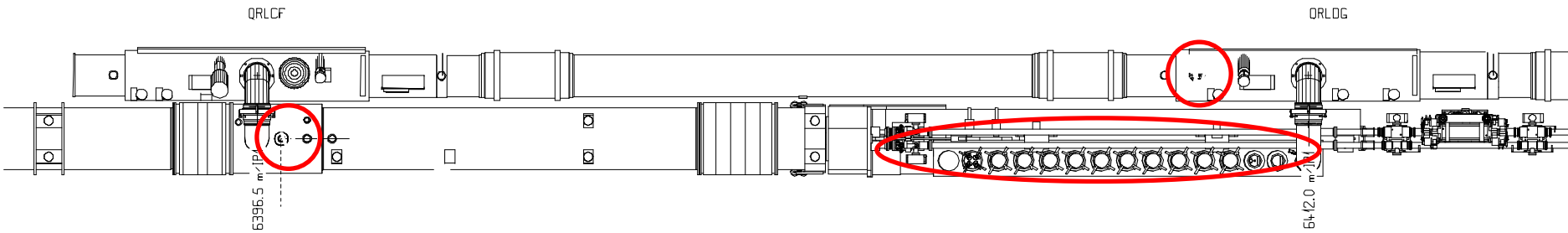
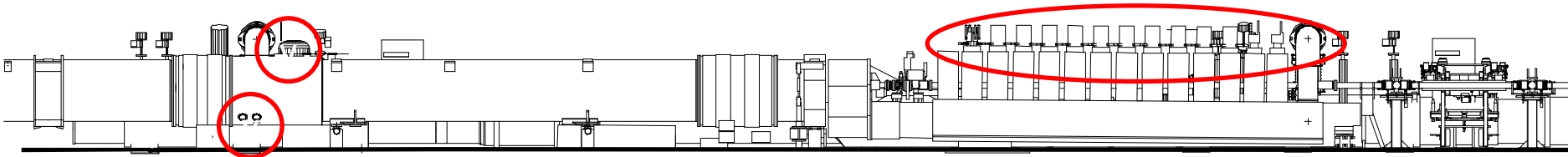


QRLBB



DFBAE L3 DCUM 6412 m

RZ33 R34



Q6L3 DCUM 6446 m DFBMD & QRLIC (Return module)

