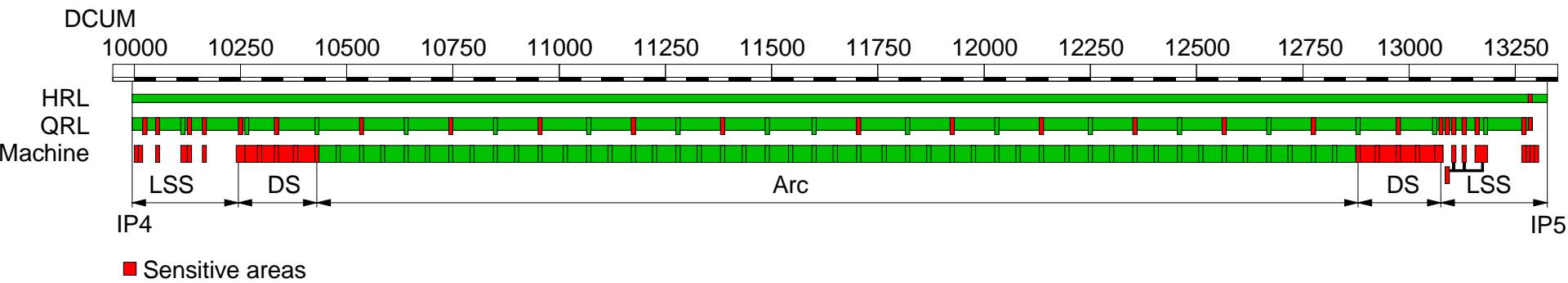


Annex 4 to EDMS 1406764 v1.4

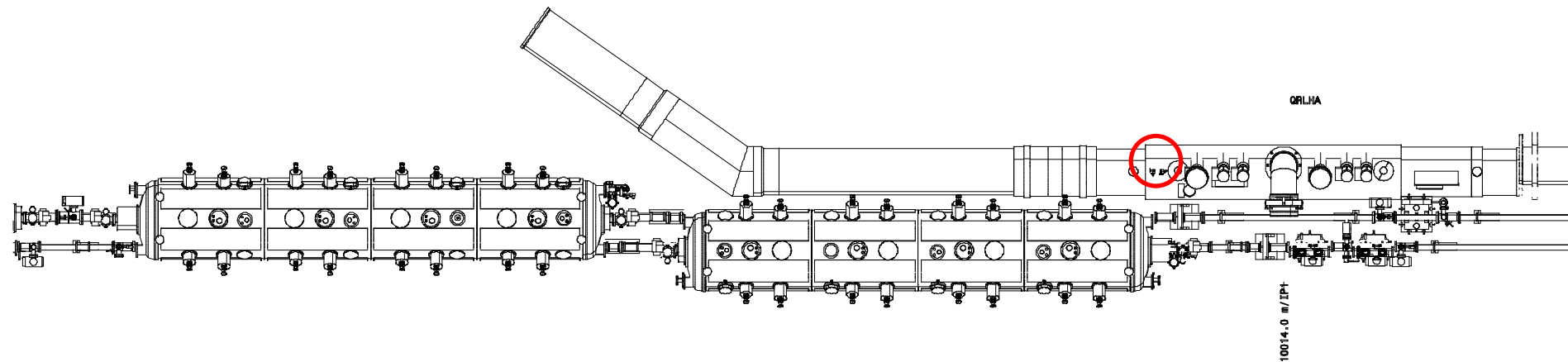
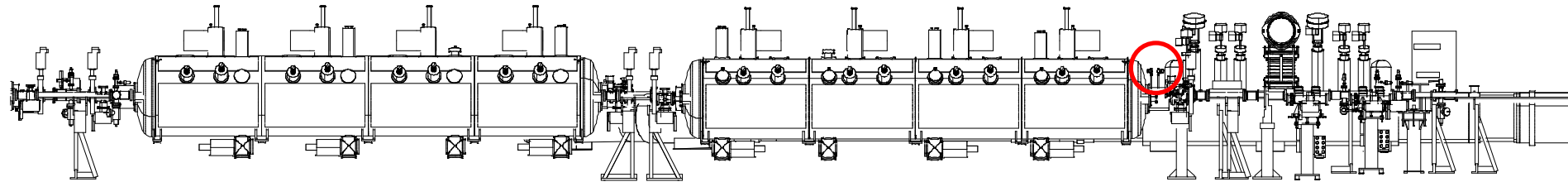
**Sector 45:
Identification of “sensitive areas”
for helium spill**

L. Tavian, 21 October 2014

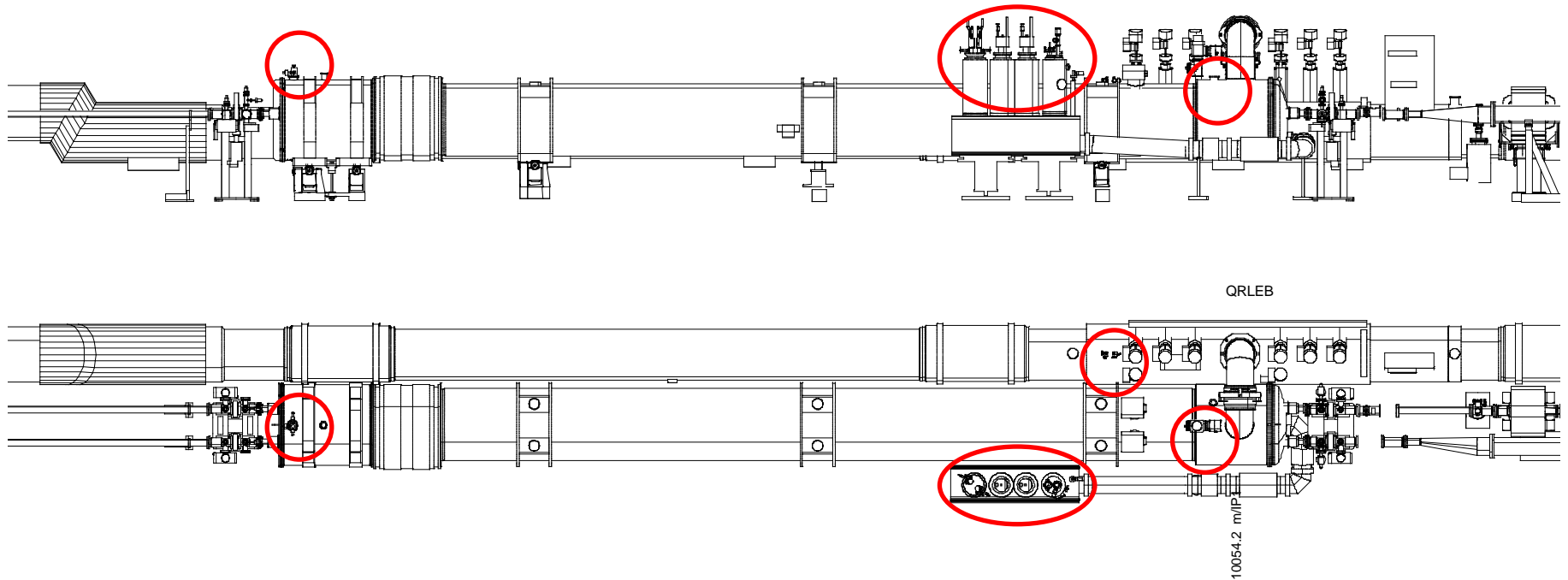
Sector 45 overview



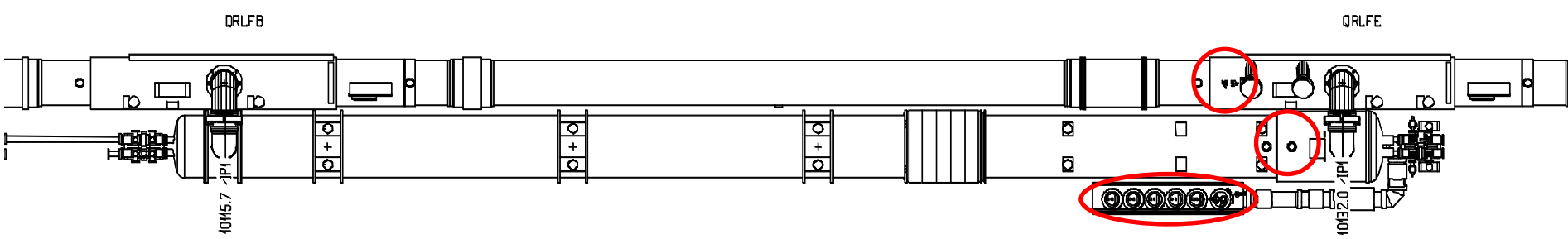
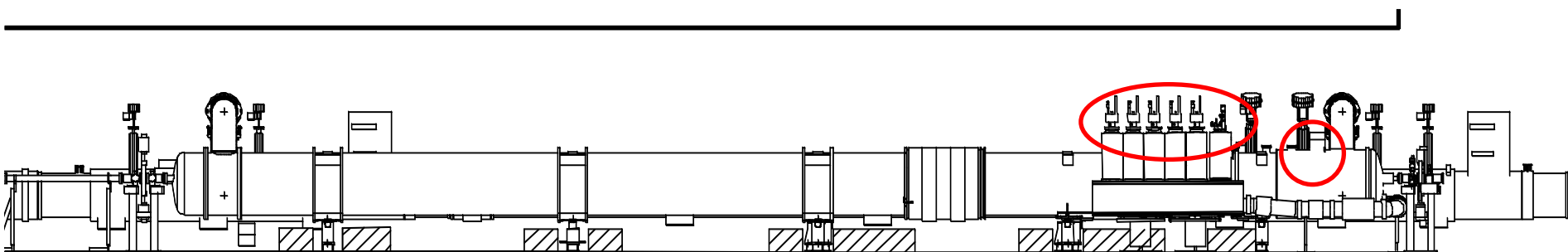
ACS R4 DCUM 10014 m



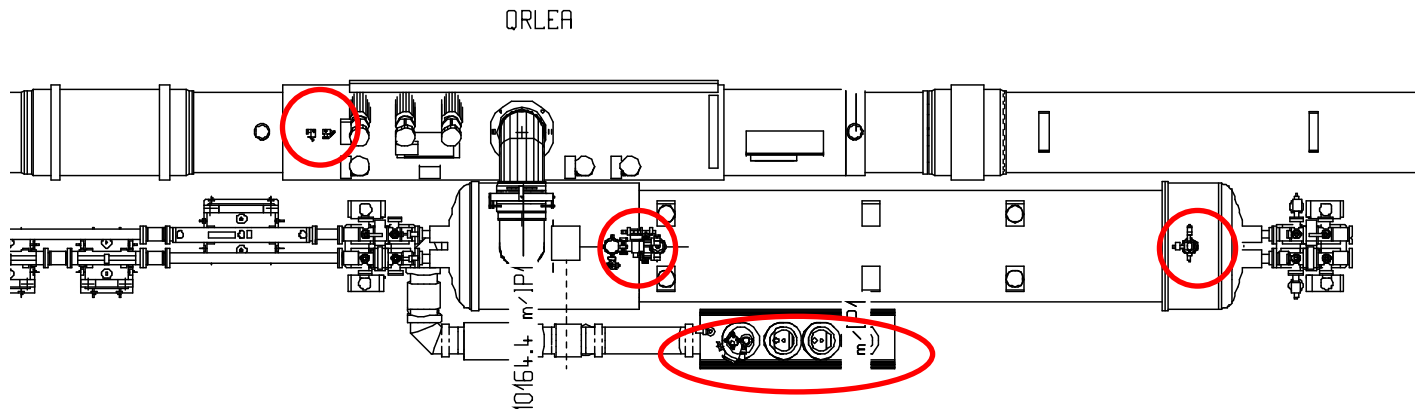
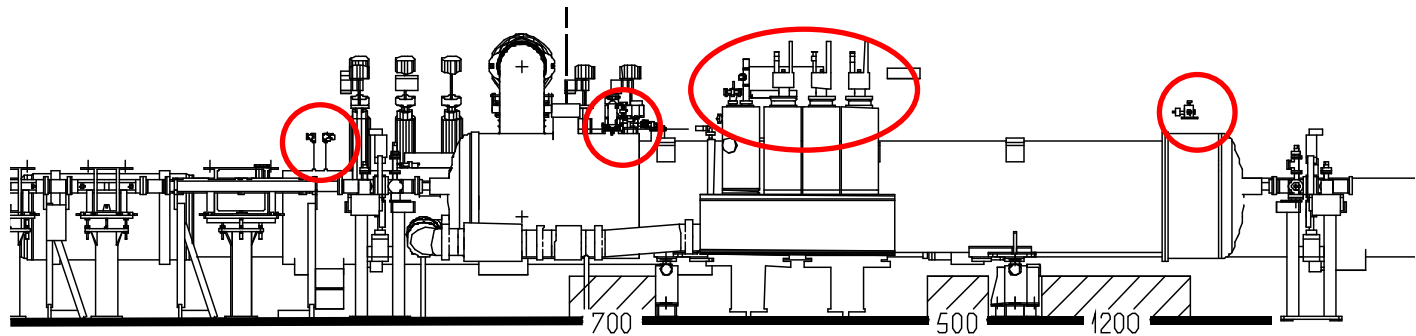
D3R4 DCUM 10054 m DFBMK



D4Q5R4 DCUM 10132 m DFBML

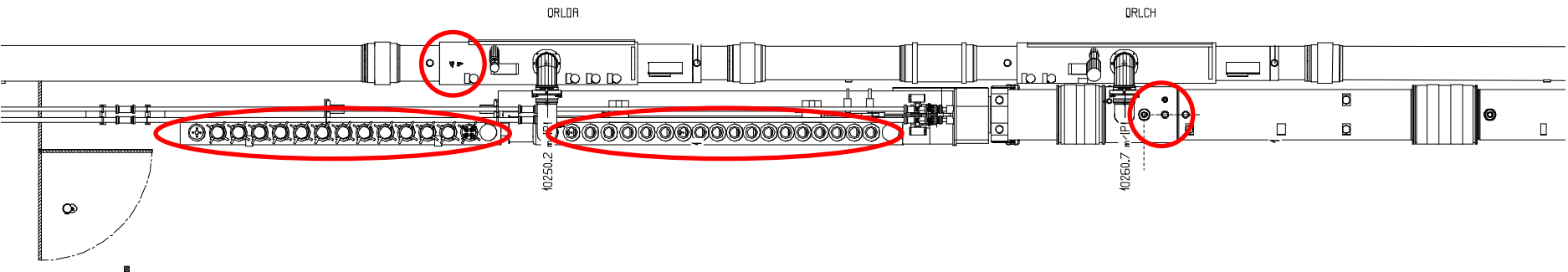
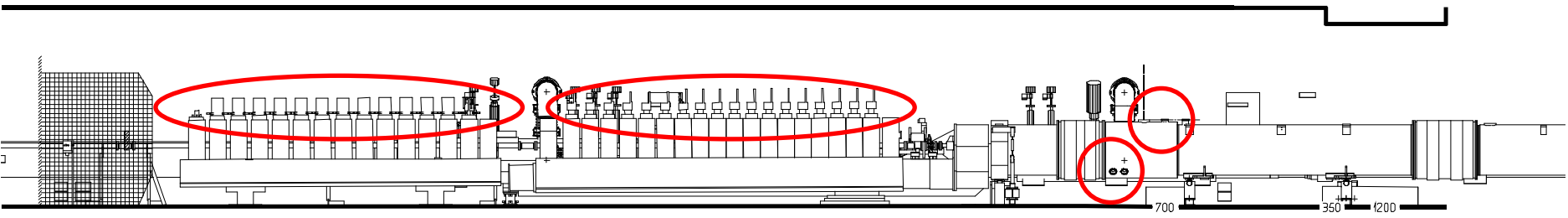


Q6R4 DCUM 10164 m DFBMG

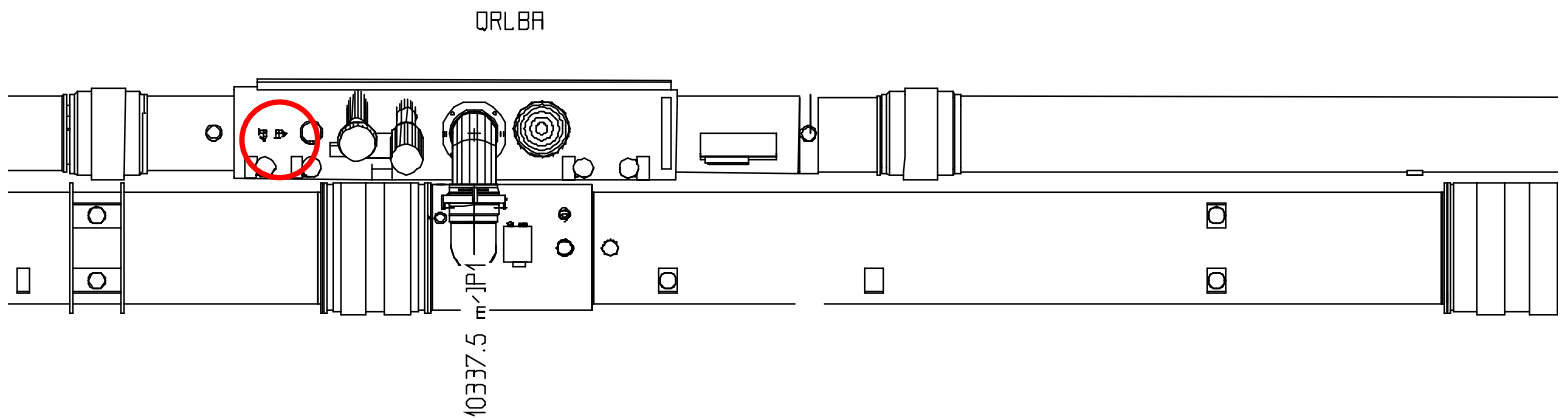
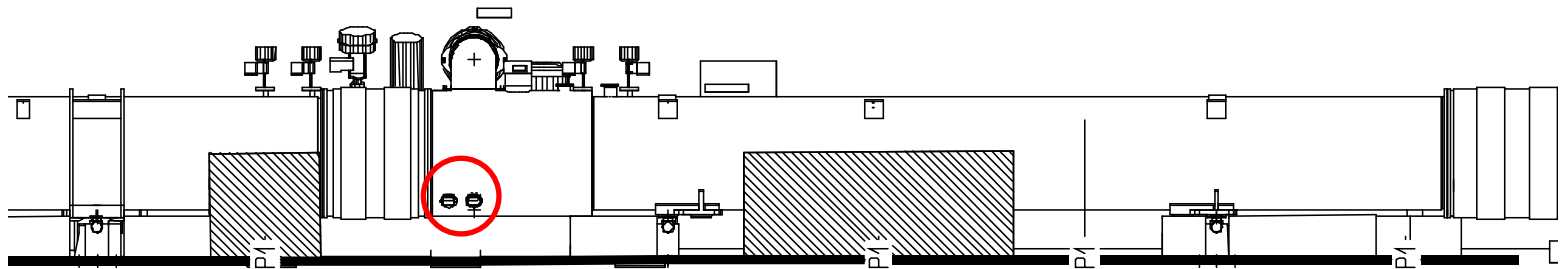


DFBAH R4 DCUM 10250 m

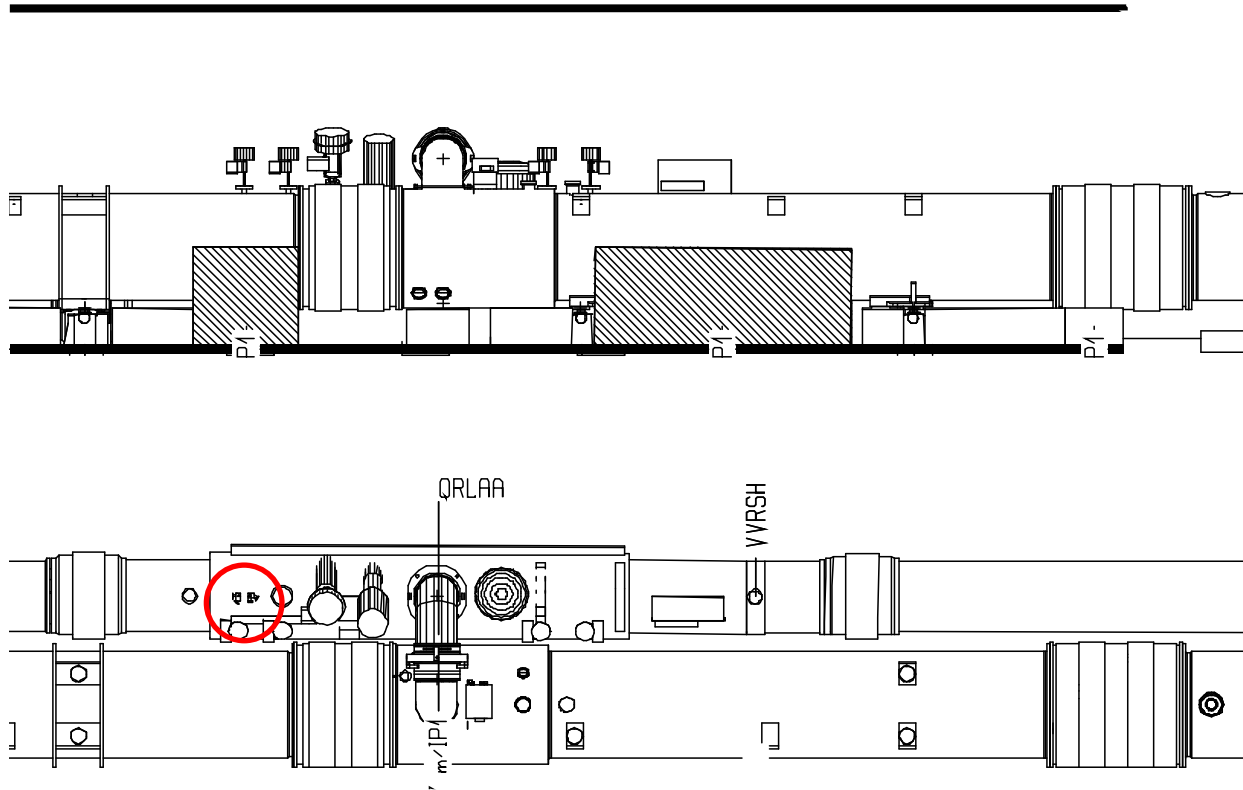
UJ47



Q9R4 DS DCUM 10336 m

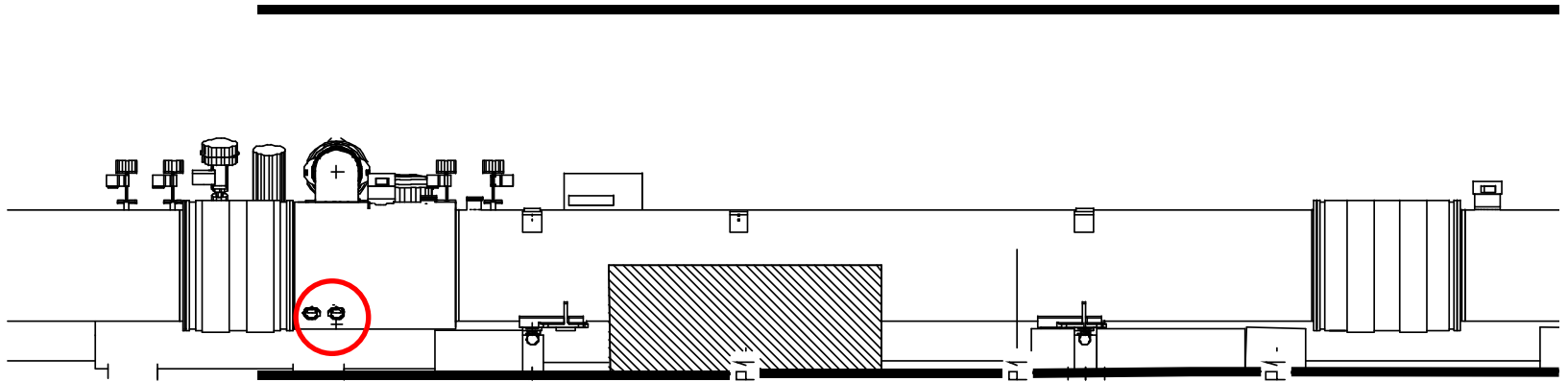


QRLAA service module in the Arc45

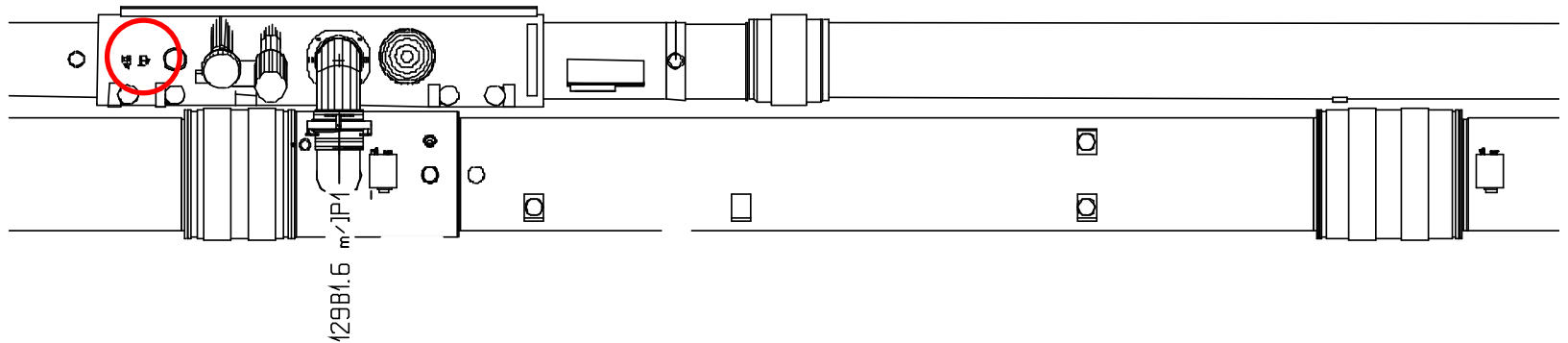


- Q13R4 DCUM 10538 m
- Q17R4 DCUM 10754 m
- Q21R4 DCUM 10968 m
- Q25R4 DCUM 11182 m
- Q29R4 DCUM 11396 m
- Q33L5 DCUM 11714 m
- Q29L5 DCUM 11928 m
- Q25L5 DCUM 12142 m
- Q21L5 DCUM 12355 m
- Q17L5 DCUM 12569 m
- Q13L5 DCUM 12783 m

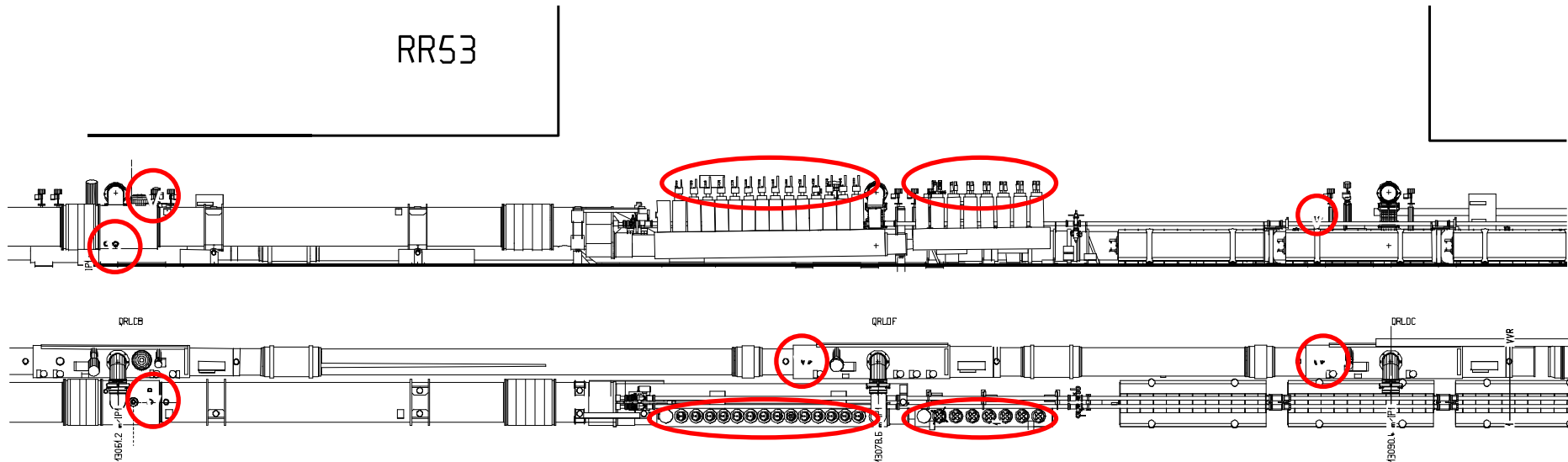
Q9L5 DS DCUM 12982 m



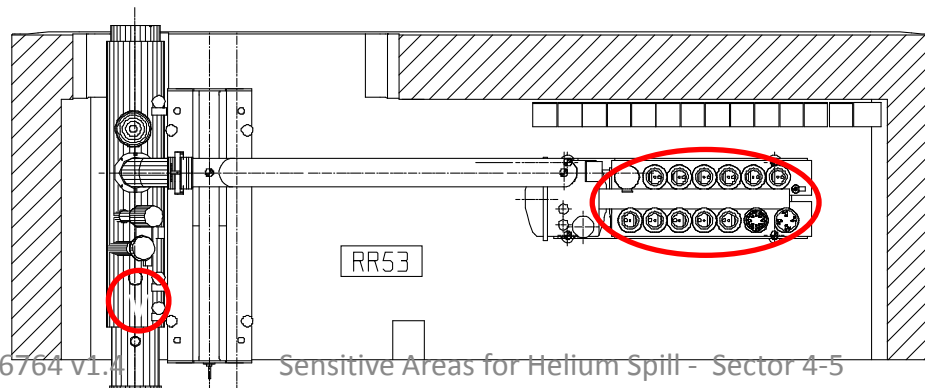
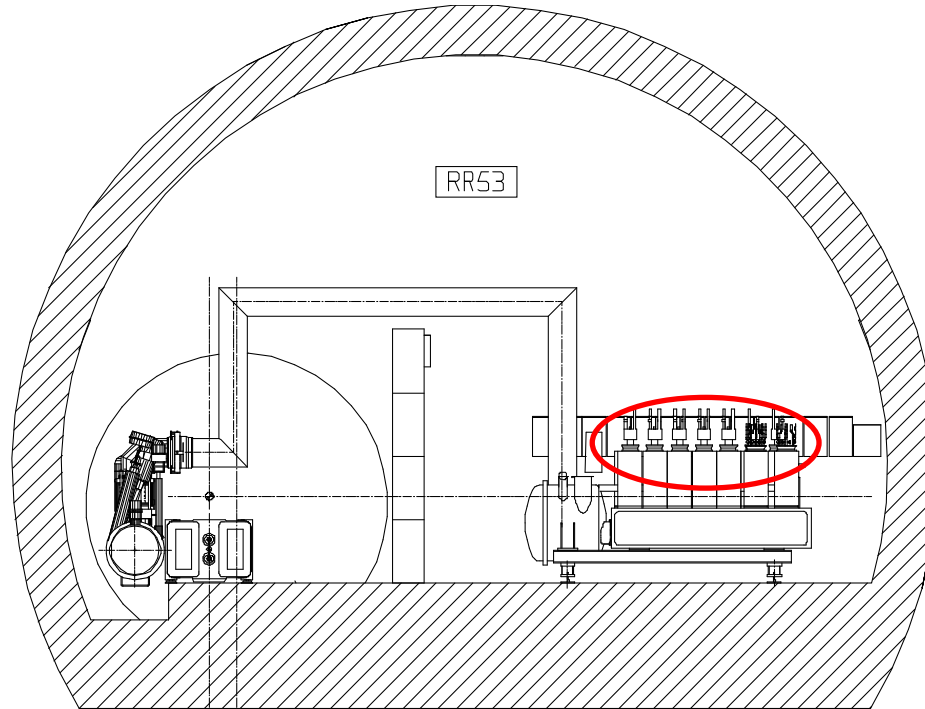
QRLBA



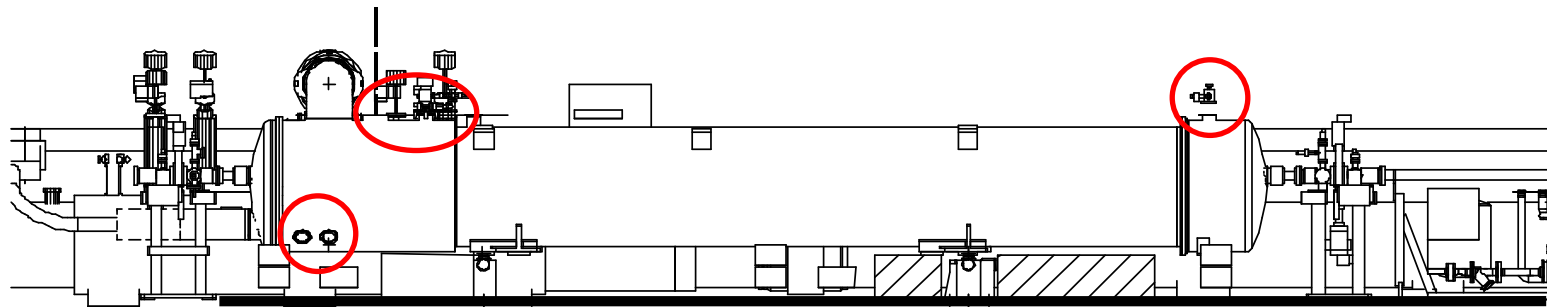
DFBAI L5 DCUM 13077 m



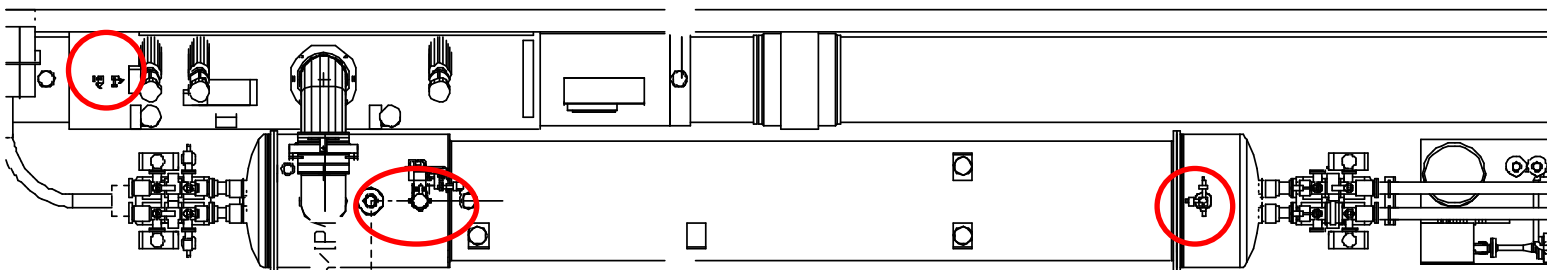
DFBLD L5 DCUM 13090 m



Q6L5 DCUM 13098 m

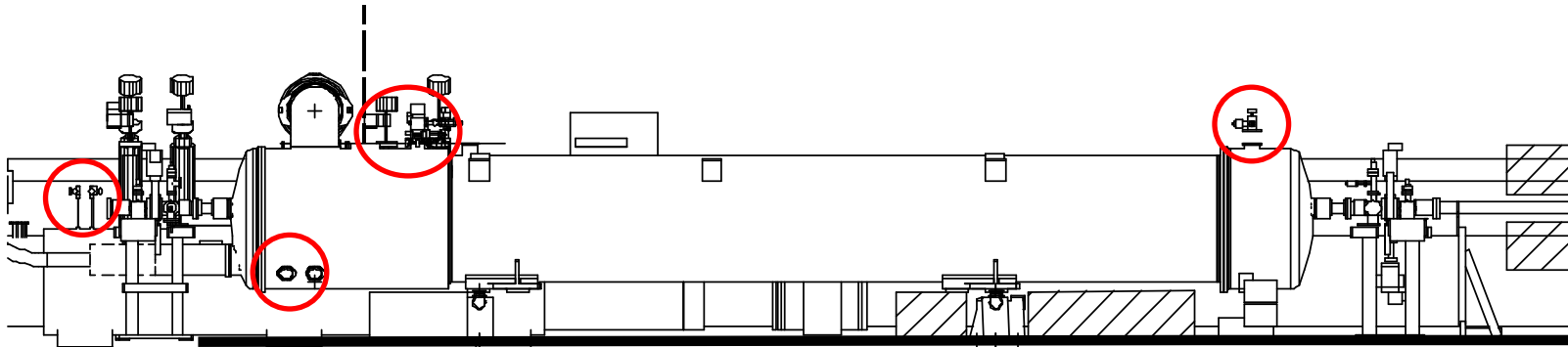


ORLEC

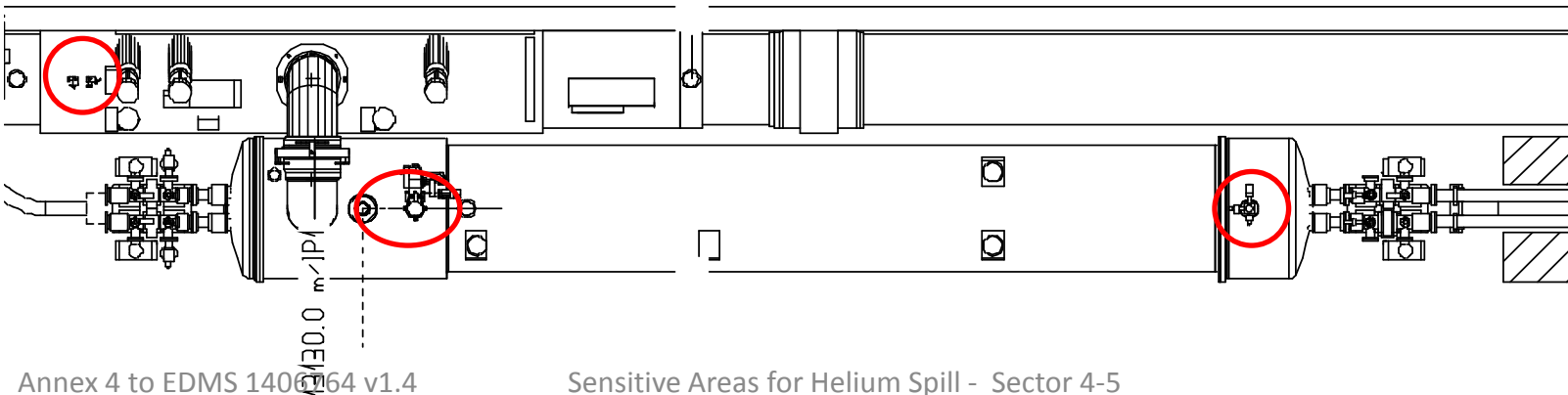


13098 m
1.860E1

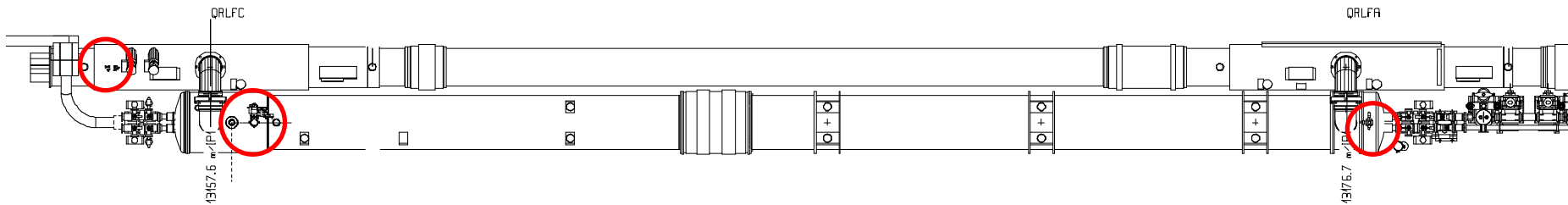
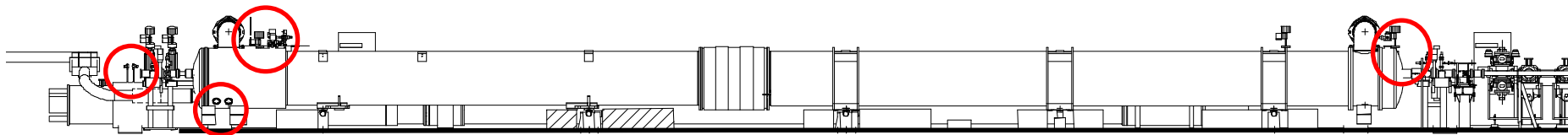
Q5L5 DCUM 13130 m



QRLEC



Q4D2L5 DCUM 13158 m



DFBXE IT5 DCUM 13272 m QRLID (return module)

