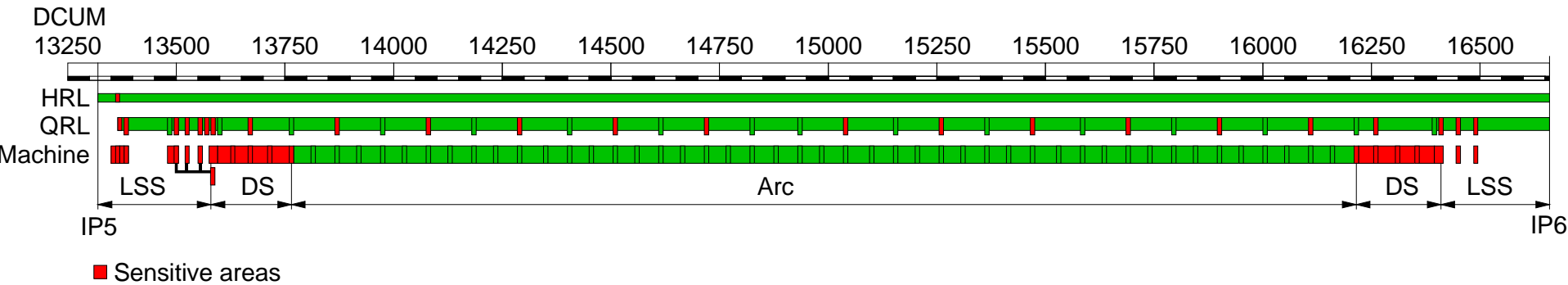


Annex 5 to EDMS 1406764 v1.2

**Sector 56:
Identification of “sensitive areas”
for helium spill**

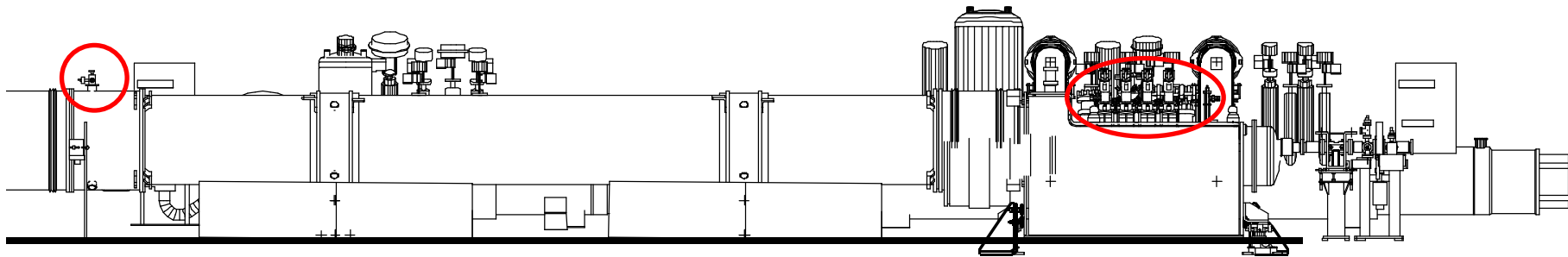
L. Tavian, 10 August 2014

Sector 56 overview



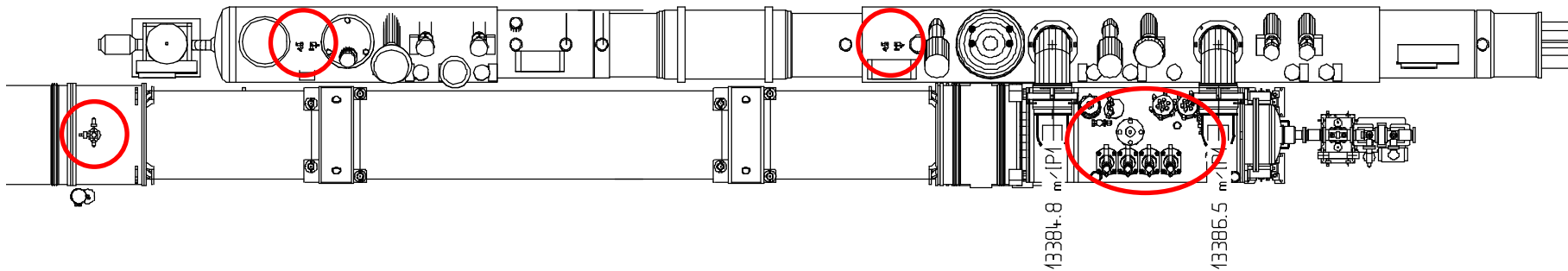
DFBXF R5 DCUM 13385 m

QRLIA (Return module)

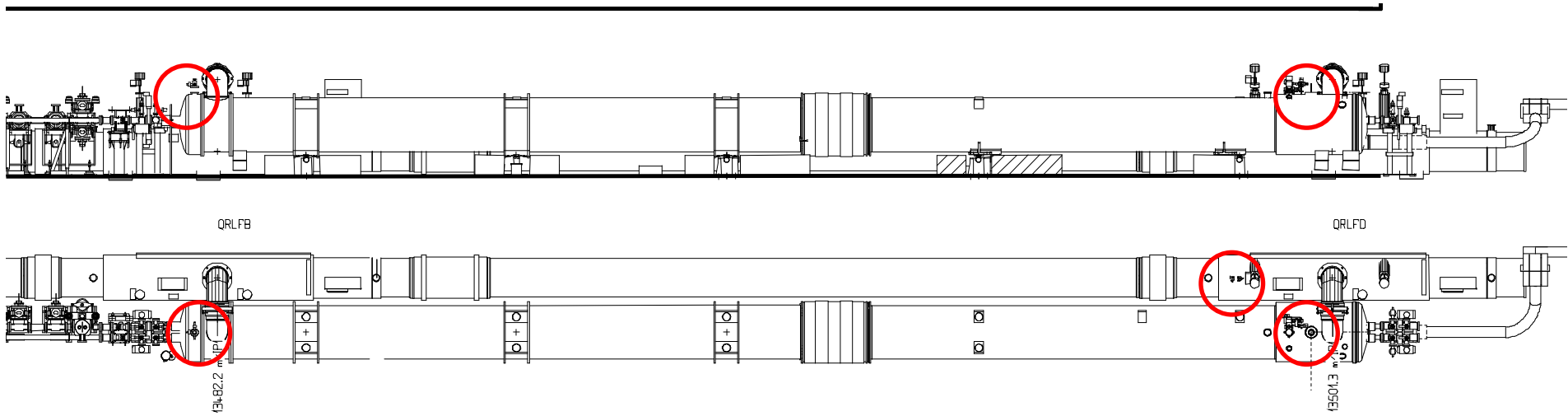


QRLIA

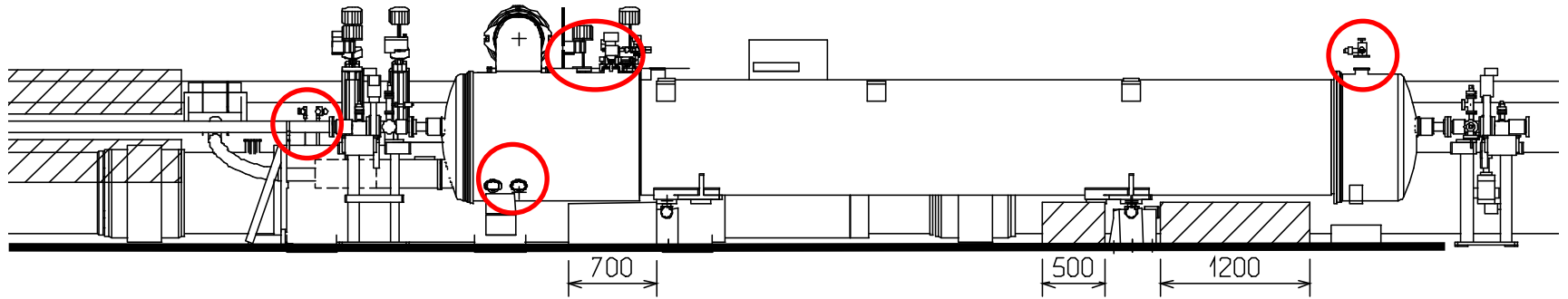
QRLGB



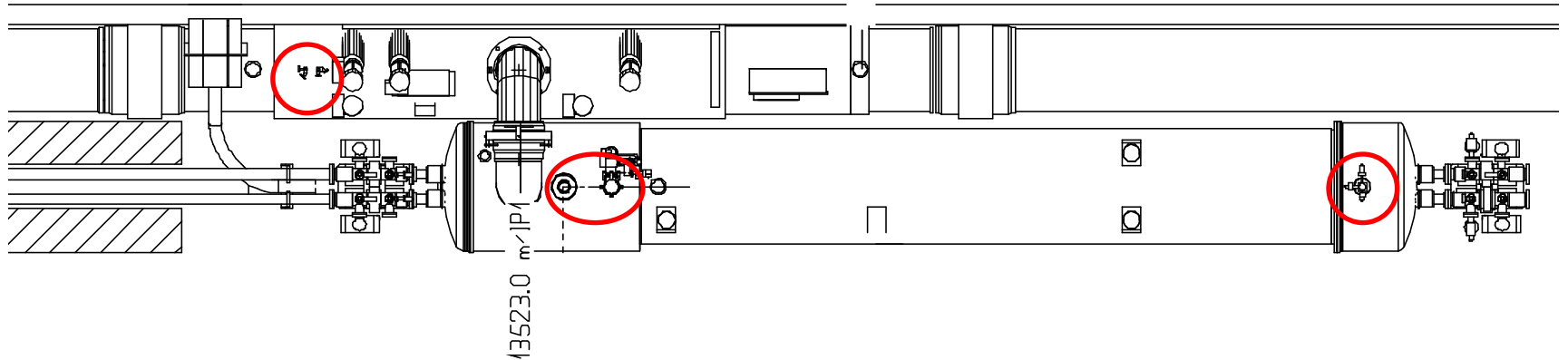
D2Q4R5 DCUM 13501 m



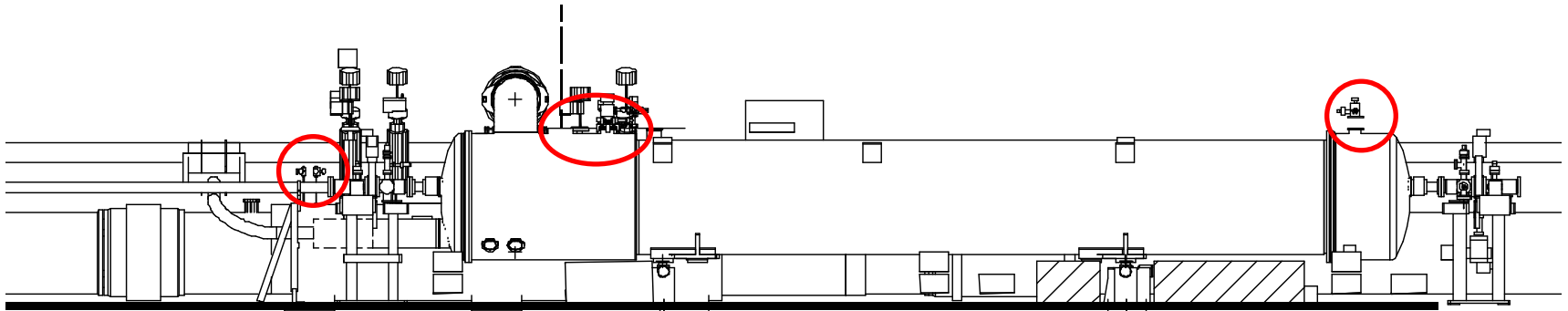
Q5R5 DCUM 13523 m



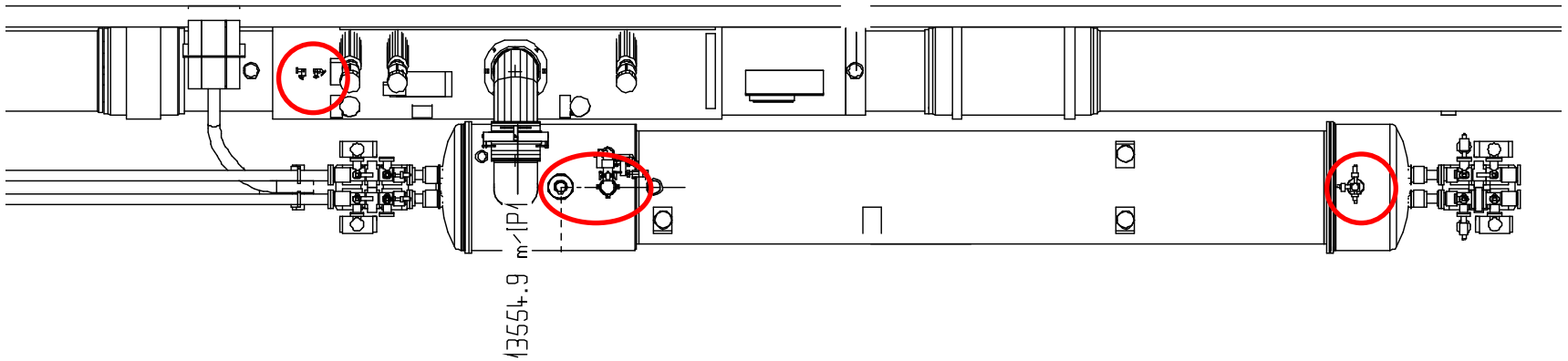
QRLEC



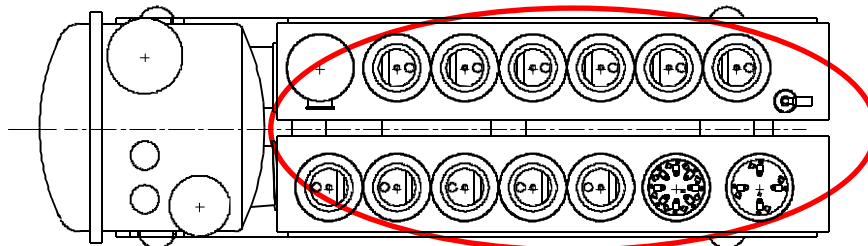
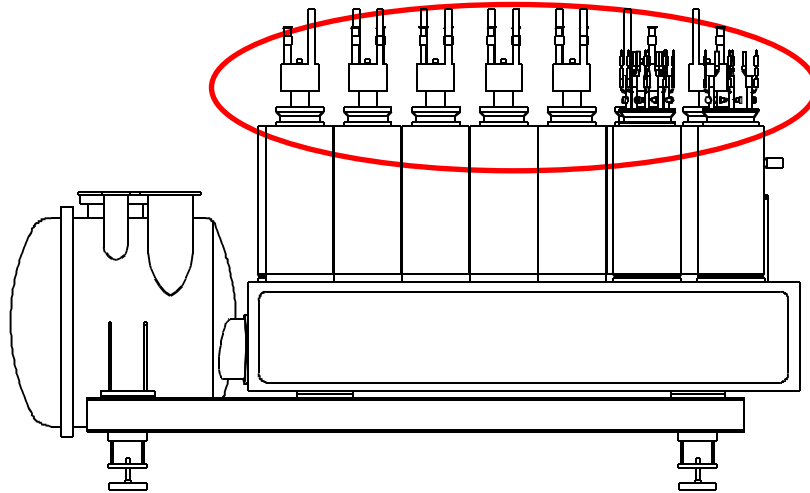
Q6R5 DCUM 13555 m



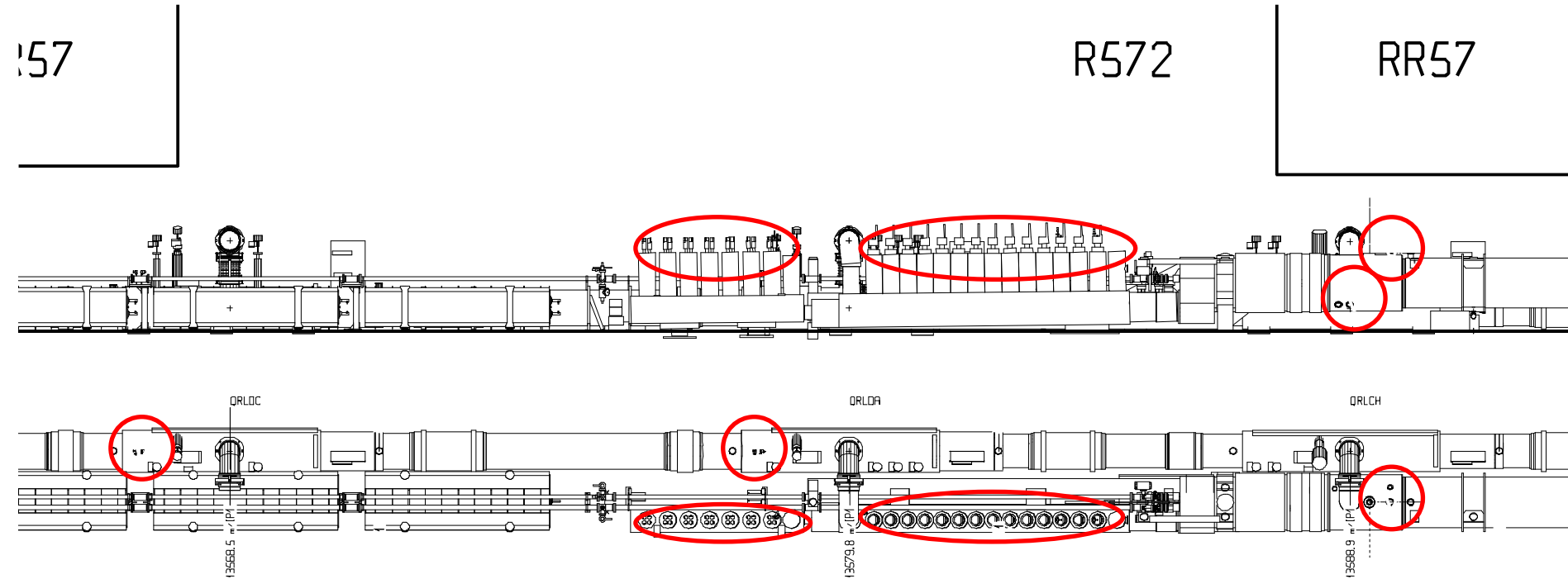
QRLEC



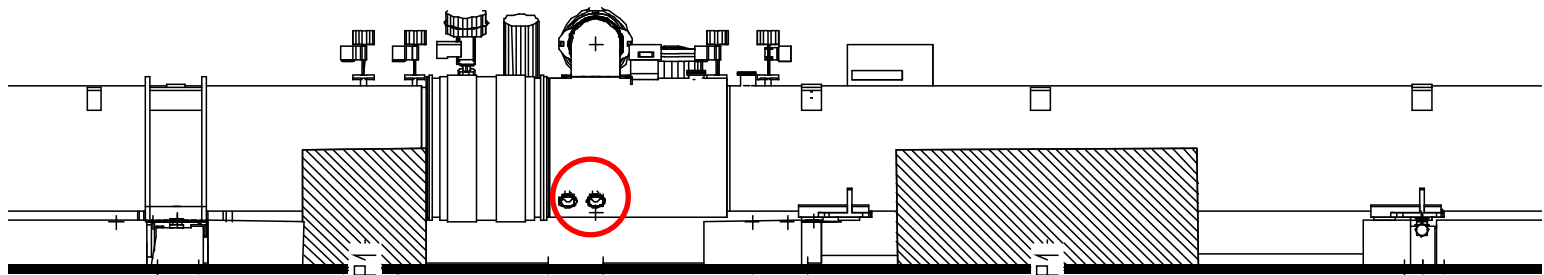
DFBLE in RR57 DCUM 13580 m



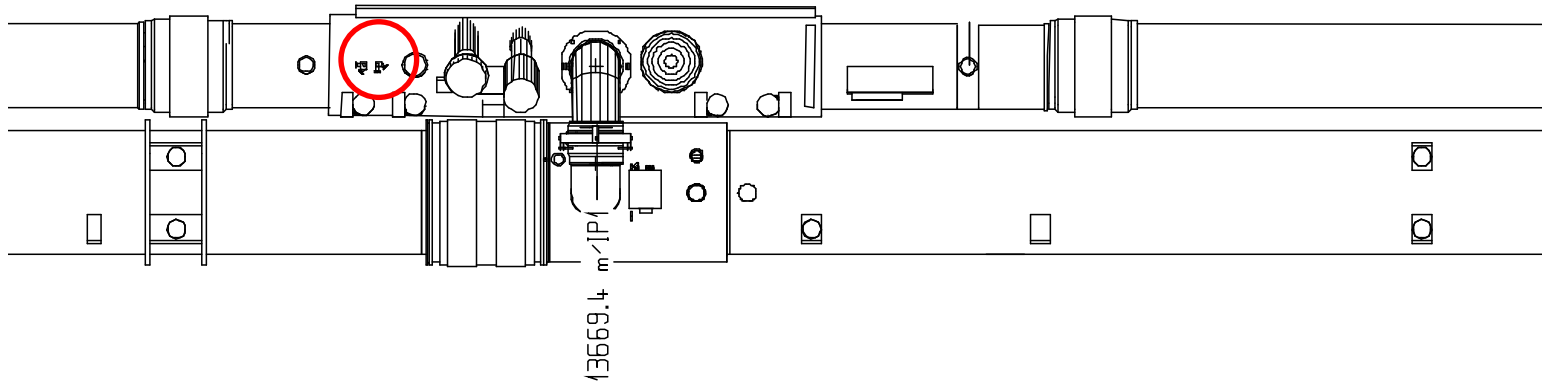
DFBAJ L1 DCUM 13580 m



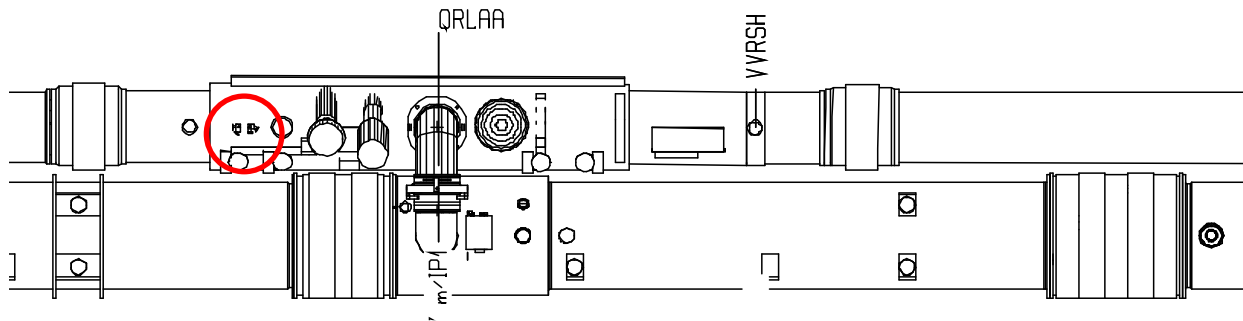
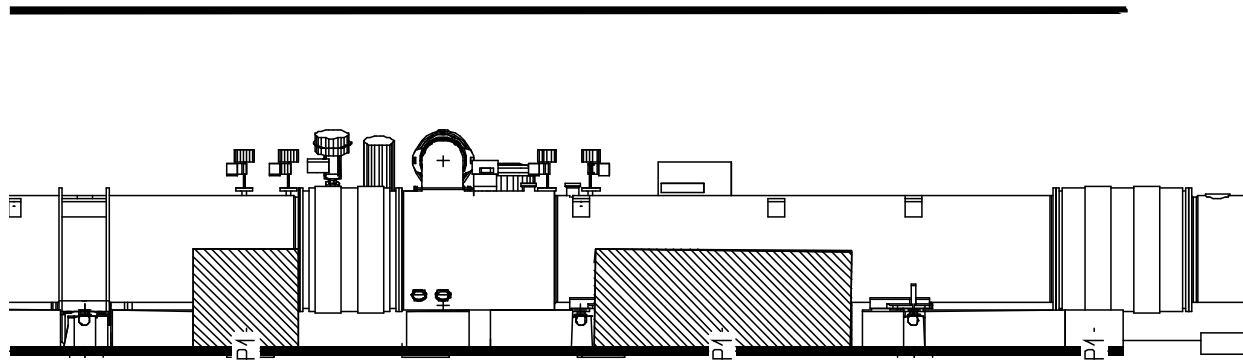
Q9R5 DS DCUM 13669 m



QRLBA

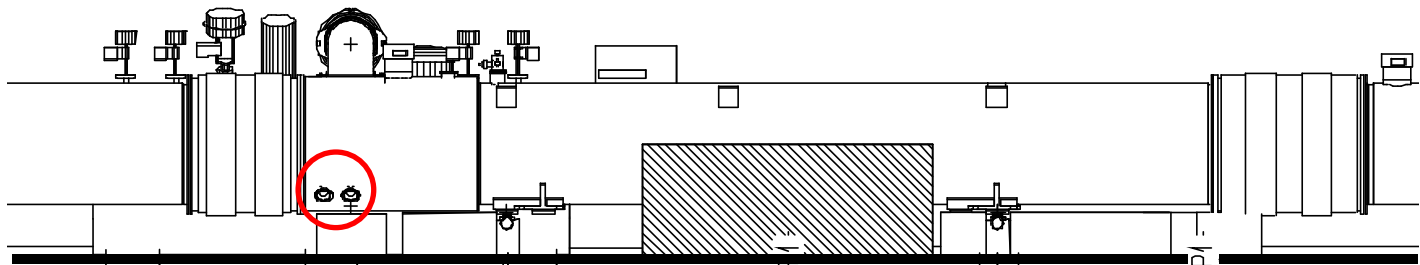


QRLAA service module in the Arc56

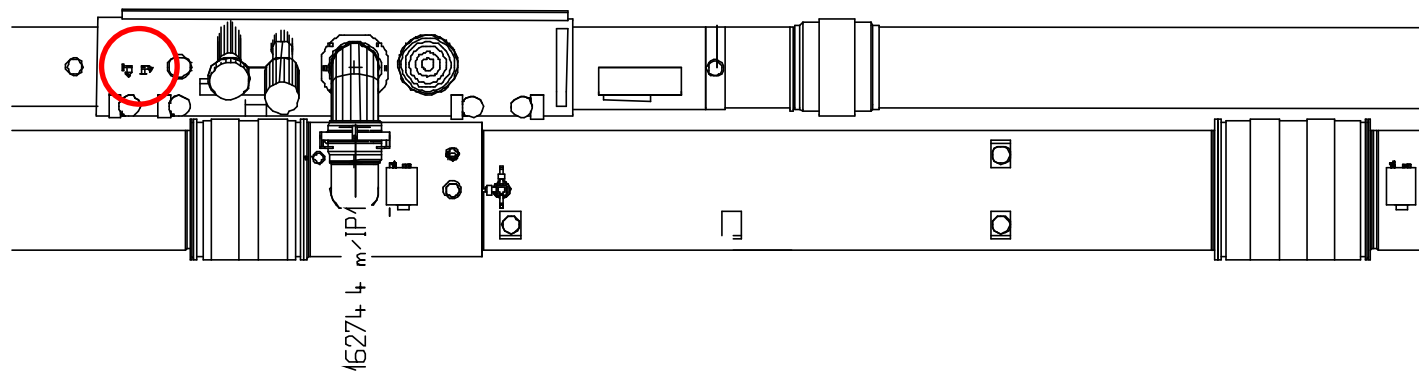


- Q13R5 DCUM 13871 m
- Q17R5 DCUM 14085 m
- Q21R5 DCUM 14298 m
- Q25R5 DCUM 14512 m
- Q29R5 DCUM 14726 m
- Q33L6 DCUM 15047 m
- Q29L6 DCUM 15261 m
- Q25L6 DCUM 15474 m
- Q21L6 DCUM 15688 m
- Q17L6 DCUM 15902 m
- Q13L6 DCUM 16116 m

Q10L6 DS DCUM 16274 m

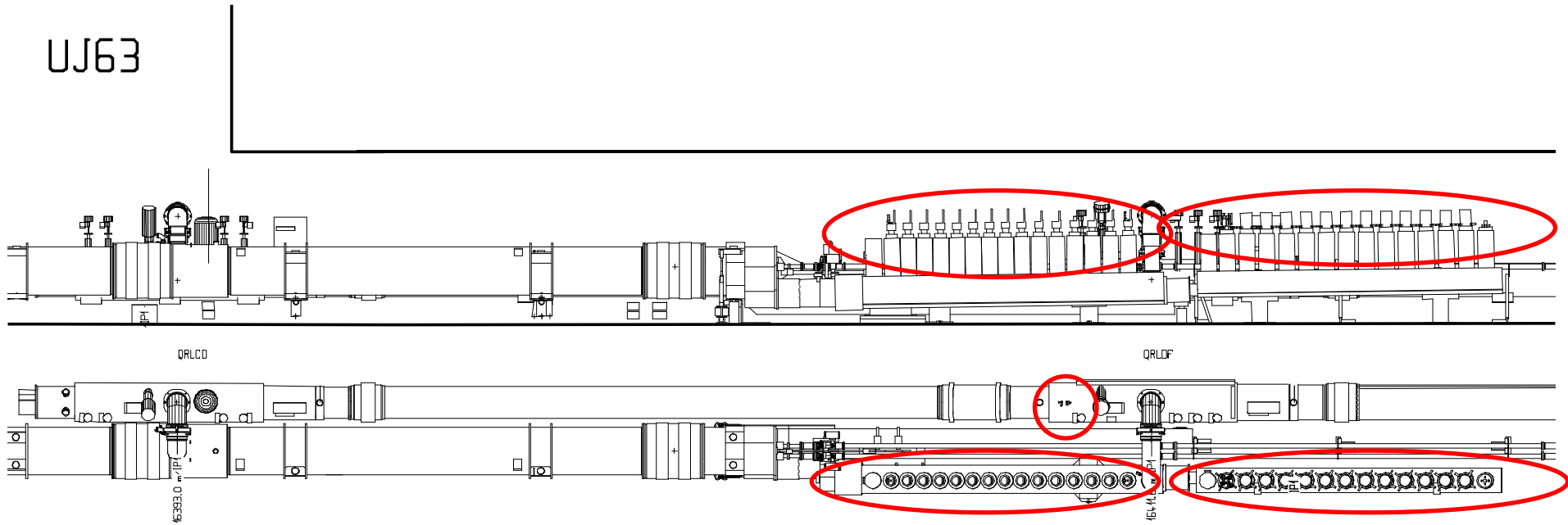


QRLBA

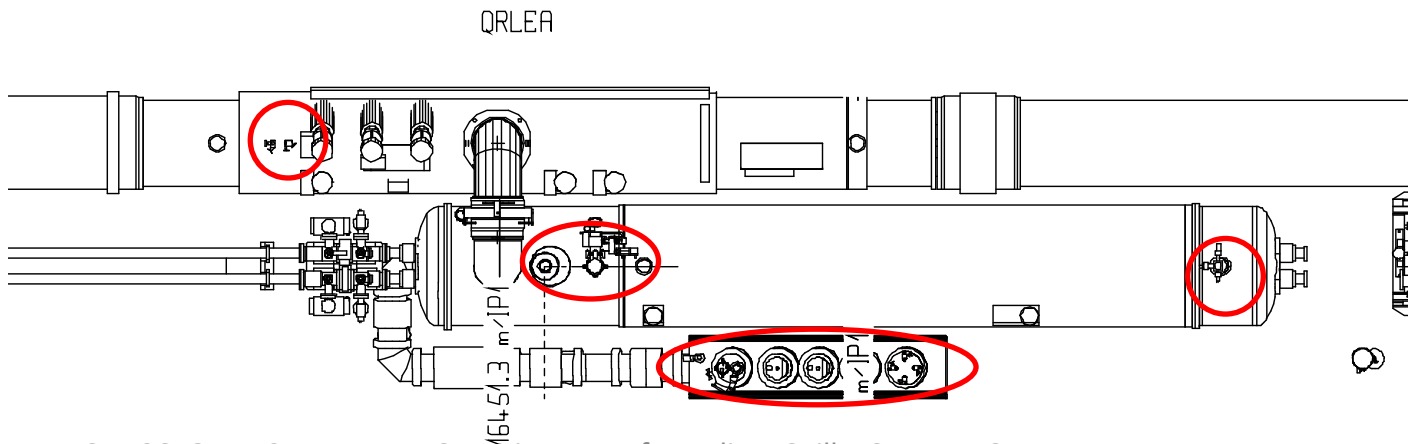
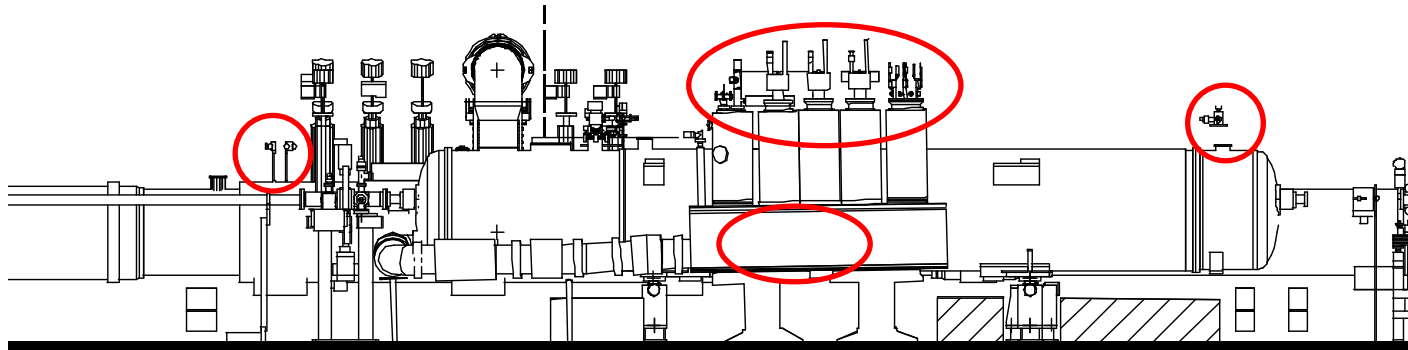


DFBAK L6 DCUM 16412 m

UJ63



Q5L6 DCUM 16451 m DFBMM



Q4L6 DCUM 16488 m

DFBMM

