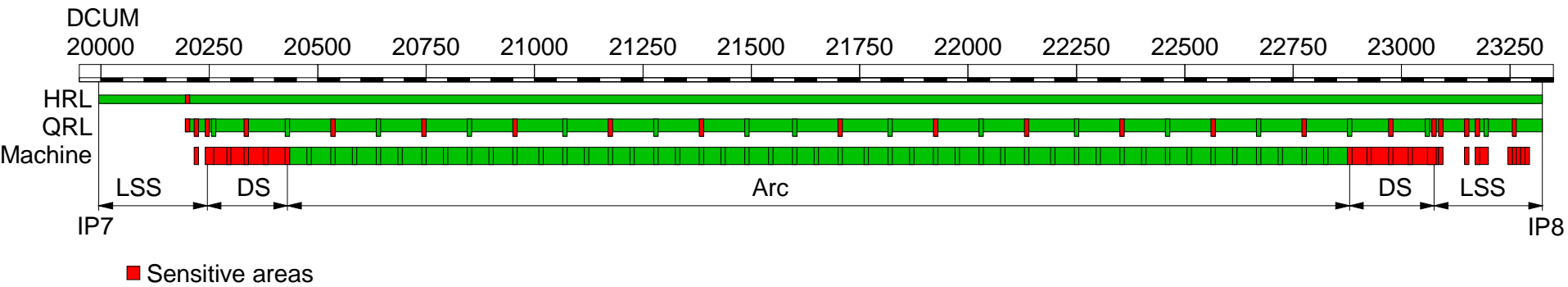


Annex 7 to EDMS 1406764 v1.3

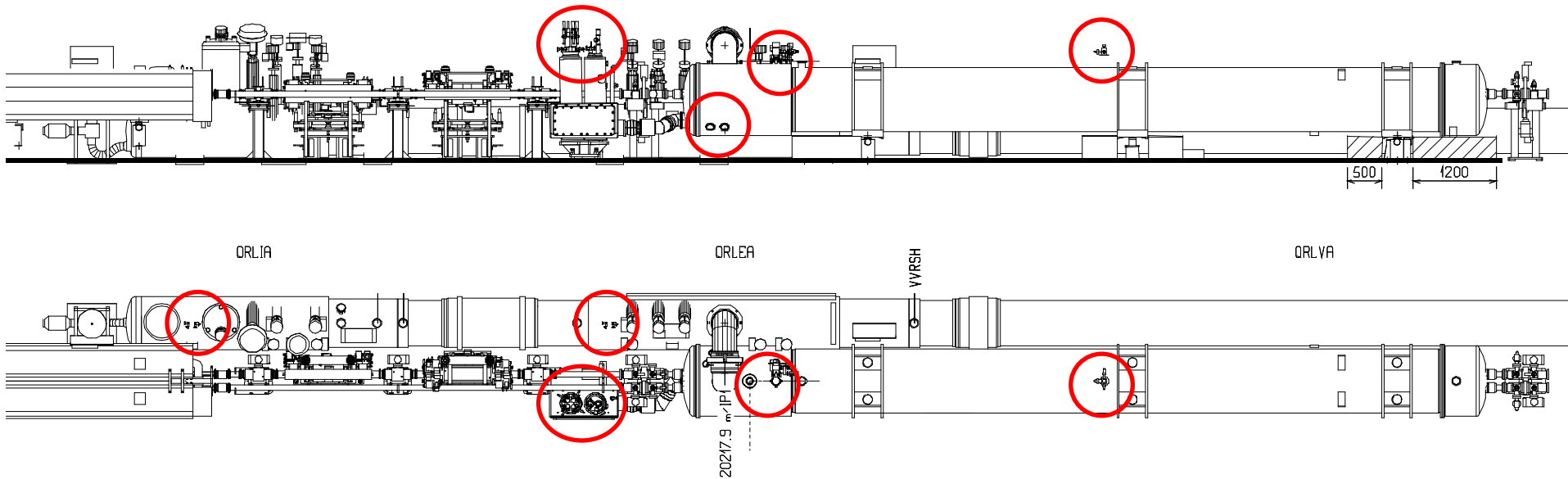
**Sector 78:
Identification of “sensitive areas”
for helium spill**

L. Tavian, 16 September 2014

Sector 78 overview

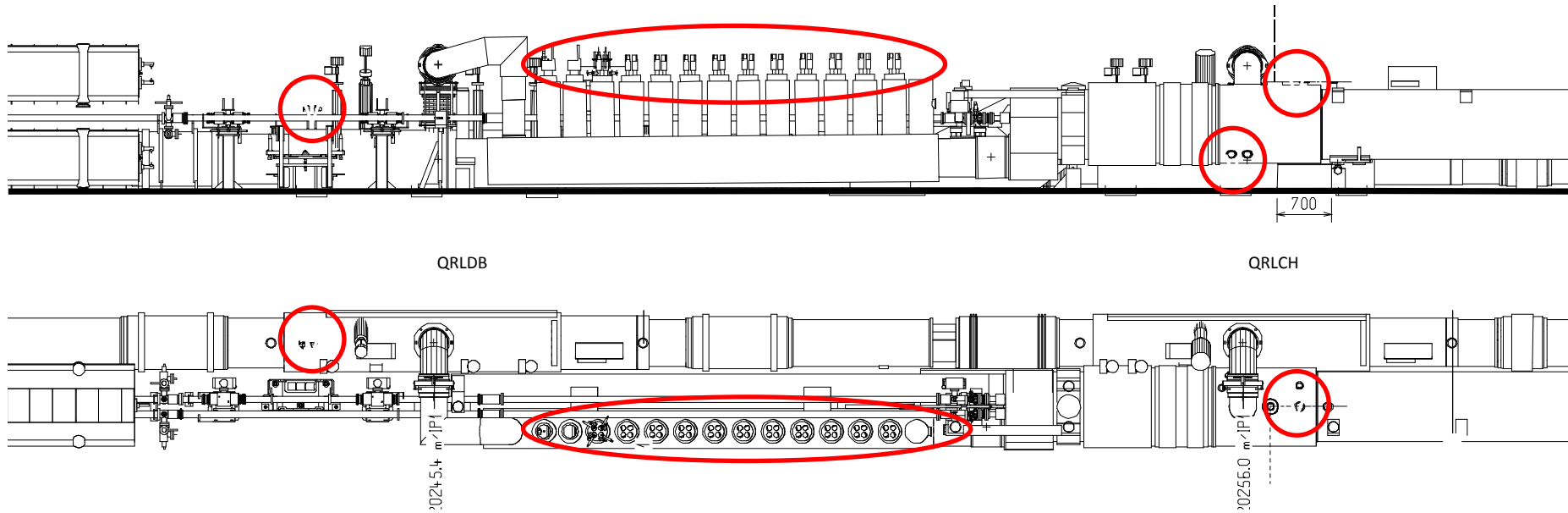


Q6R7 DCUM 20218 m DFBMH & QRLIA (Return module)

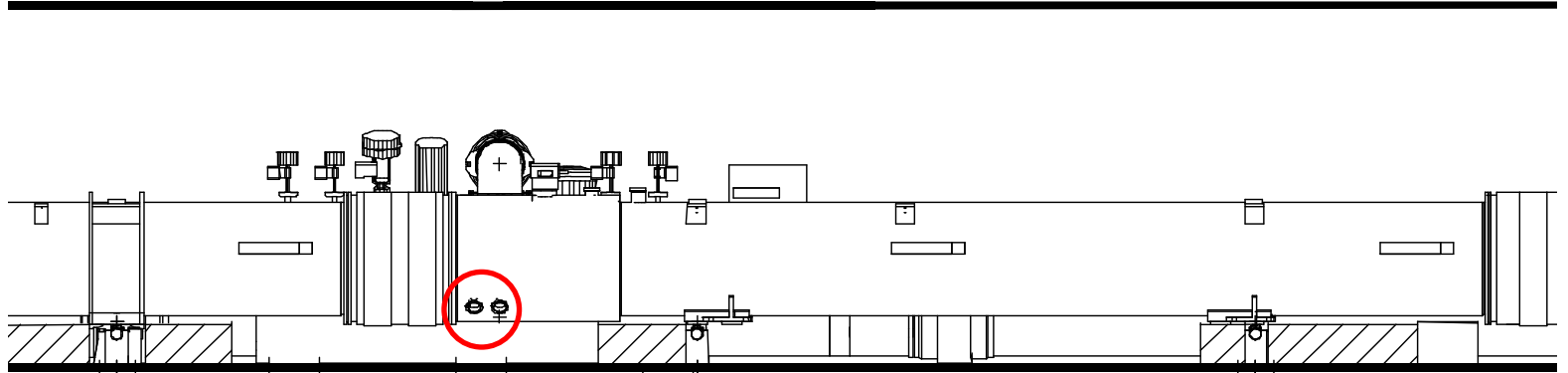


DFBAN R7 DCUM 20245 m

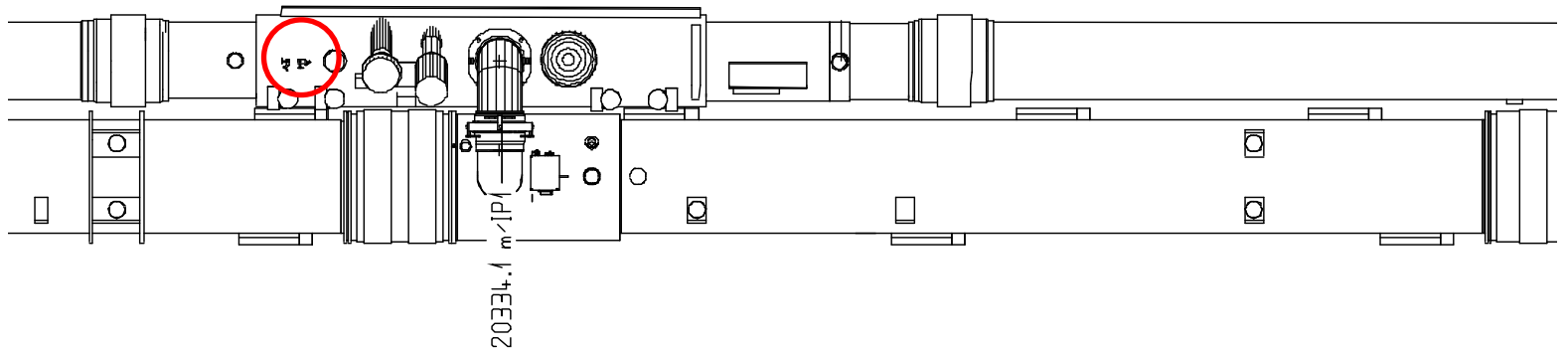
RR77



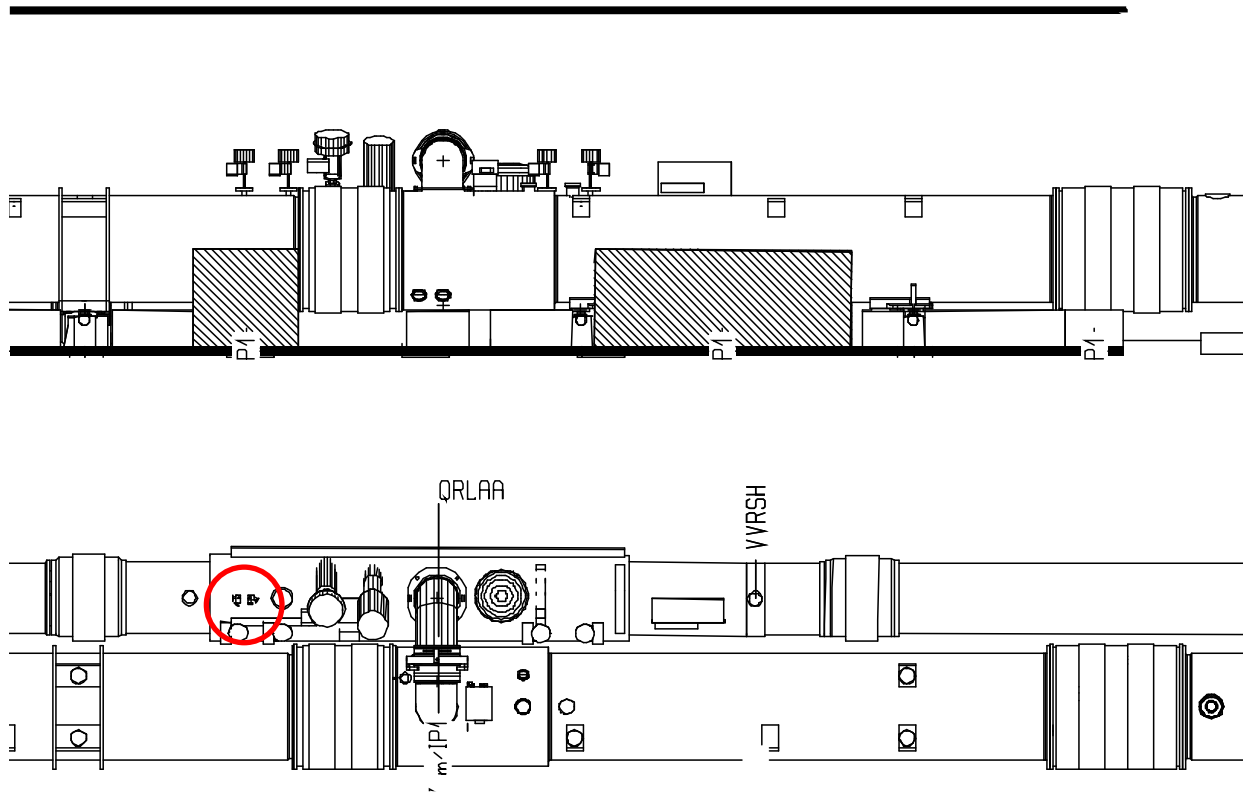
Q9R7 DS DCUM 20334 m



ORLBA

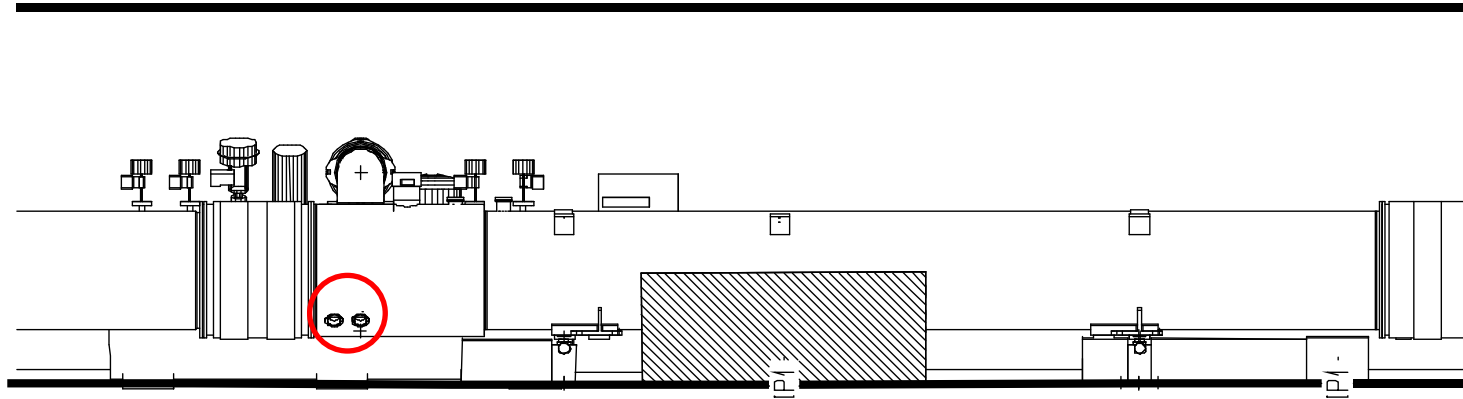


QRLAA service module in the Arc78 (QRLAF in Q25L8)

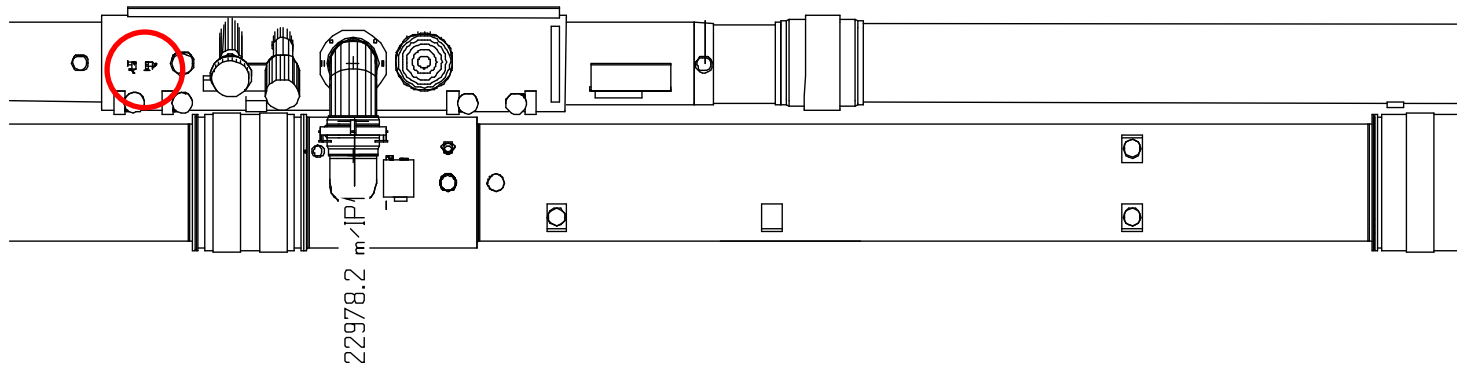


- Q13R7 DCUM 20536 m
- Q17R7 DCUM 20749 m
- Q21R7 DCUM 20963 m
- Q25R7 DCUM 21177 m
- Q29R7 DCUM 21391 m
- Q33L8 DCUM 21711 m
- Q29L8 DCUM 21925 m
- Q25L8 DCUM 22139 m
- Q21L8 DCUM 22353 m
- Q17L8 DCUM 22567 m
- Q13L8 DCUM 22780 m

Q9L8 DS DCUM 22978 m

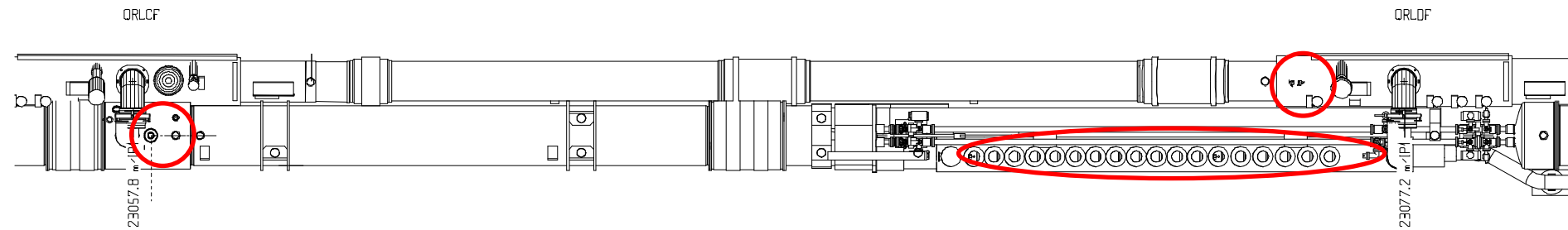
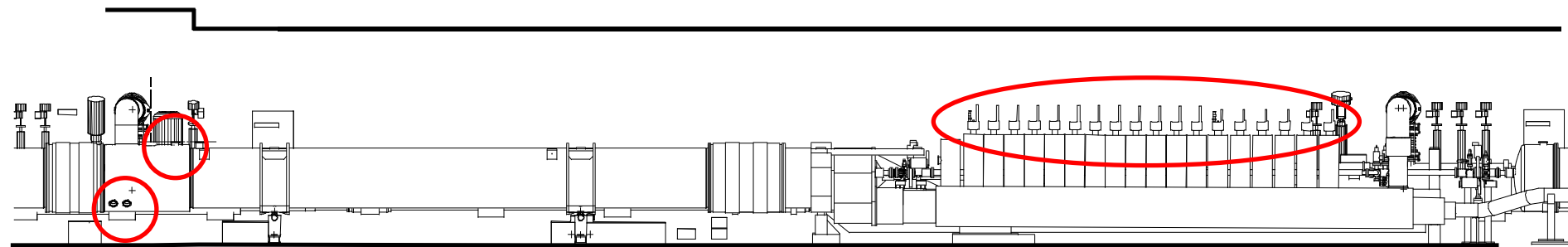


ORLBA

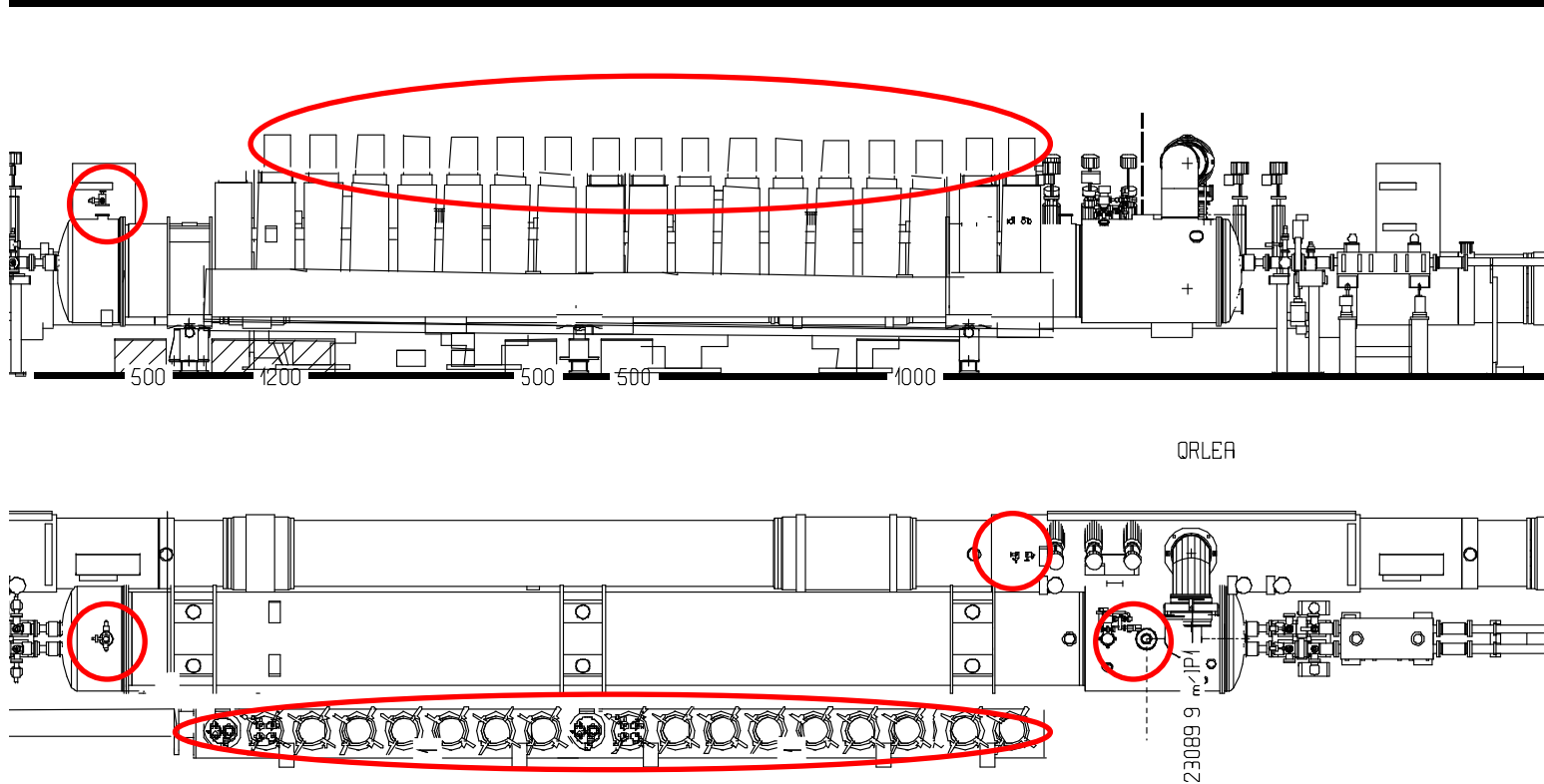


DFBAO-HCM L8 DCUM 23077 m

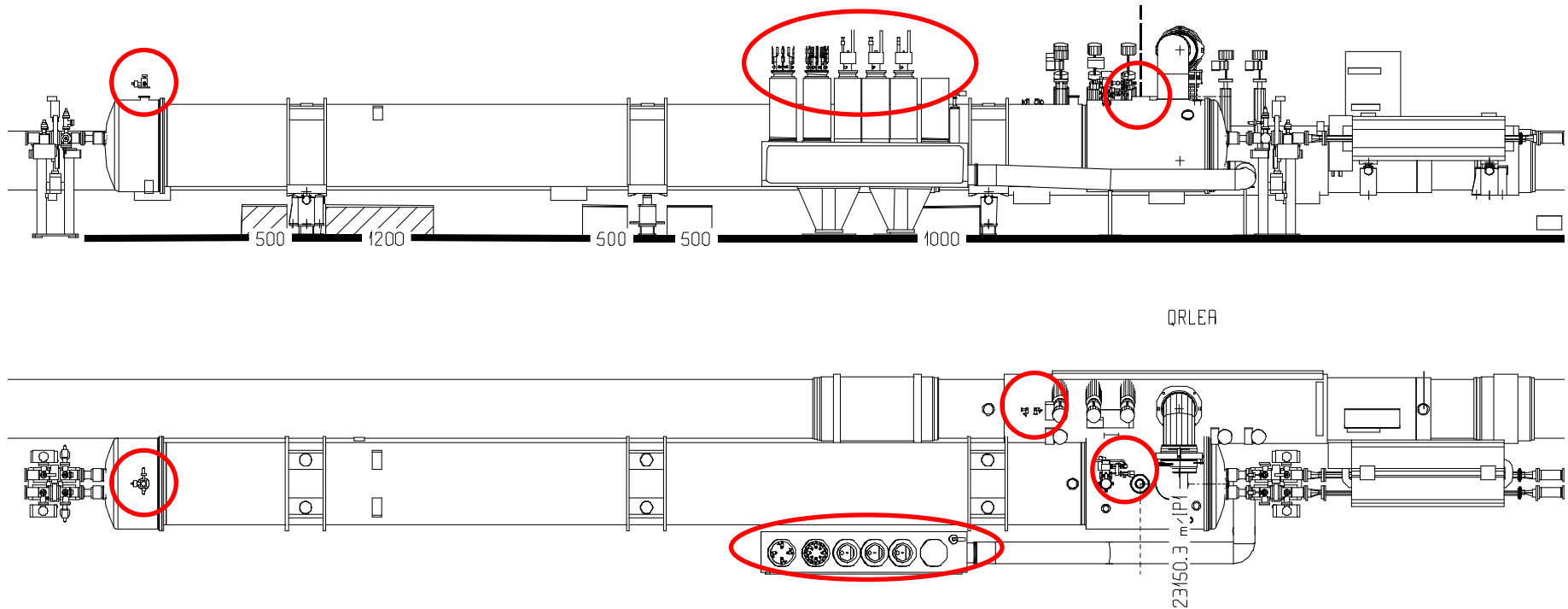
UJ83



Q6L8 DFBAO-LCM DCUM 23090 m

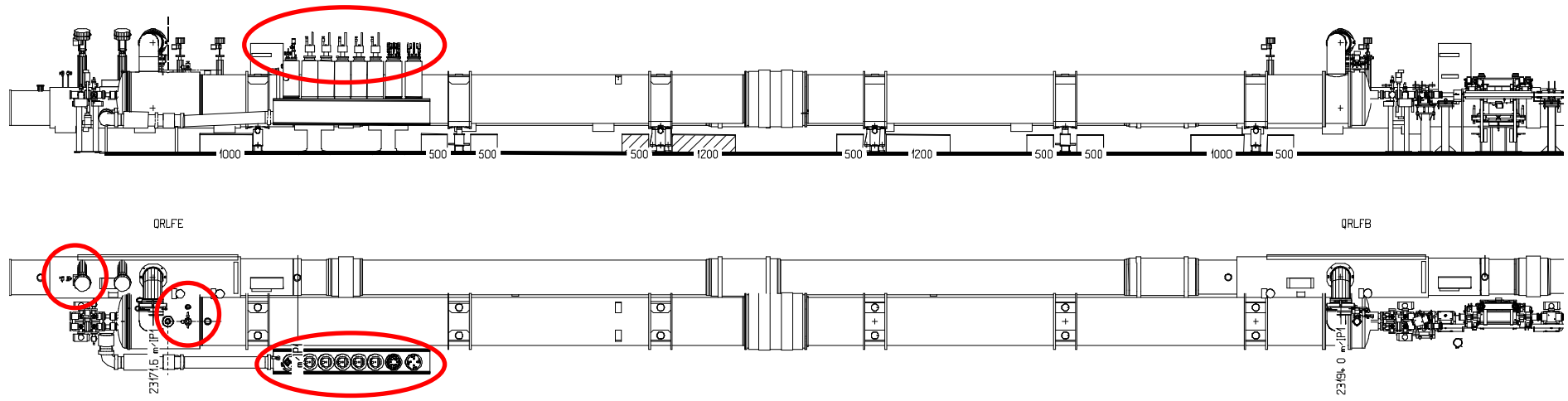


Q5L8 DCUM 23150 m DFBMC



Q4L8 DCUM 23172 m

DFBMA



DFBXG L8 DCUM 23258 m

