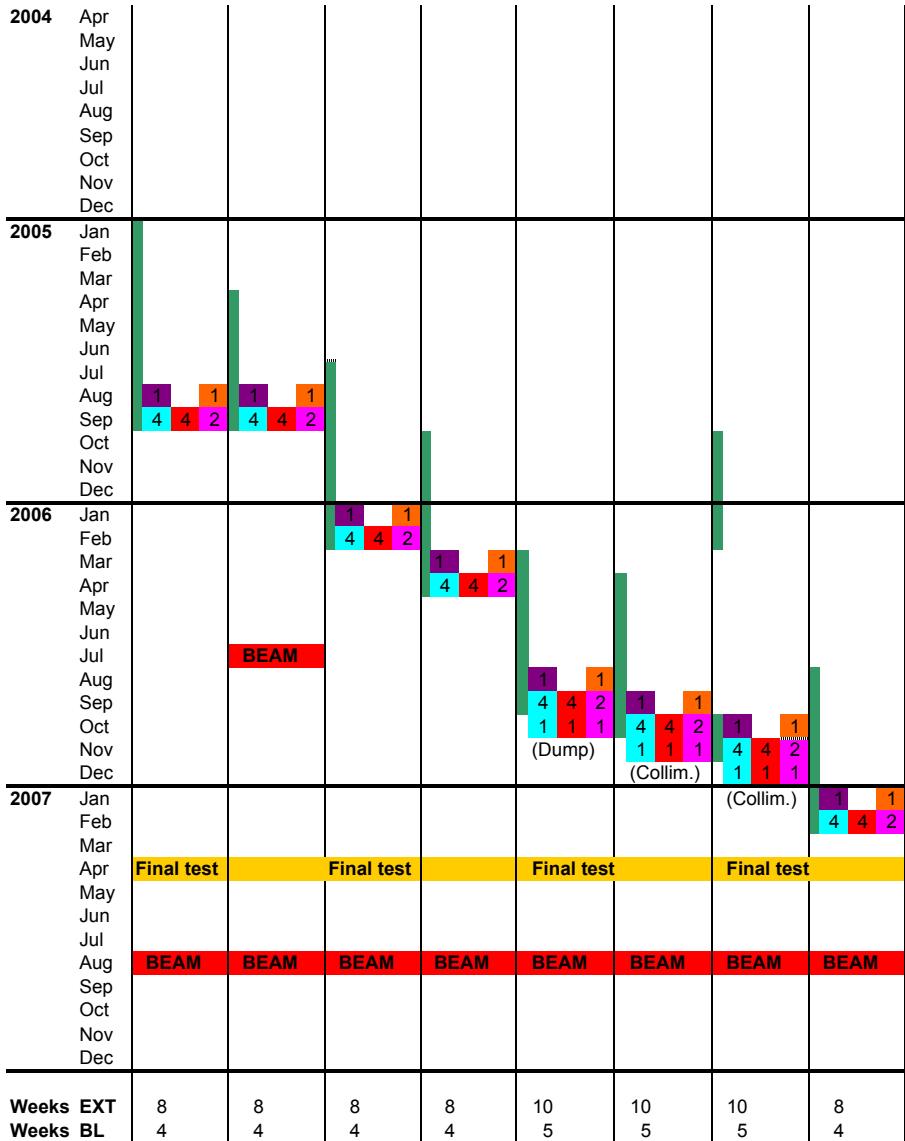


23/3/2004

Beam Loss LHC installation planning

SECTOR | 7-8 | 8-1 | 4-5 | 3-4 | 5-6 | 6-7 | 2-3 | 1-2 |



- 1 Check location
1 week / sector 70 quad, 2 persons
8 weeks / LHC 16 man weeks
- 2 Supports installation
- 3 Chambers installation
- 4 Mini rack installation (BPM BLM) under quad
(electrical car in the tunnel)
(transport of materials from lab to SR to Tunnel)
1/2 day/ 2 quadrupole 16 chambers 2 persons
70 quad 420 chambres 17.5 days 4 weeks
35 weeks/LHC 70 man weeks
- 5 Copper cables installation
- 6 Fiber patch pannel installation
- 7 Micro fip installation
- 8 Cupper cables connection on the chambers
1/2 day/ 2 quadrupole 24 cables 2 persons
70 quad 1680 cables 17.5 days 4 weeks
35 weeks/LHC 70 man weeks
- 9 Chassis installation (under quadrupole) with BPM
- 10 High Voltage cables test (CBH50)
- 11 Analog cables test (CB50) (with picometer and current source)
- 12 Cables connection on the chassis
- 13 CFC installation and test
- 14 Optical fibres installation
- 15 Test from surface
1 day 8 quad 8CFC, 8 Alim, 18 otical cords, 3- 4 persons
70 quad 9 days 2 weeks/ sector 3- 4 persons
19 weeks/LHC 57 or 72 man weeks
- 16 Surface installation
1 week / point 2 persons
8 weeks / LHC 16 man weeks

■ Generals Interconnections Works
■ Works 2 - 4 ■ Works 5 - 8 ■ Works 9 - 15 ■ Works 16 **140 man weeks**
■ Works 1 **89 or 104 man weeks**